

July - October 2021 | 5(3) : 2021



# Quarterly Bulletin

[www.apri.or.id](http://www.apri.or.id)



Page

02

**Master Student of Marine Science IPB, Anggini Fuji  
Conducting Research on Bycatch From Blue Swimming Crab Fisheries**

Fulfillment of indicators in minimizing environmental impacts around blue swimming crab fisheries

# Quarterly Bulletin

[www.apri.or.id](http://www.apri.or.id)

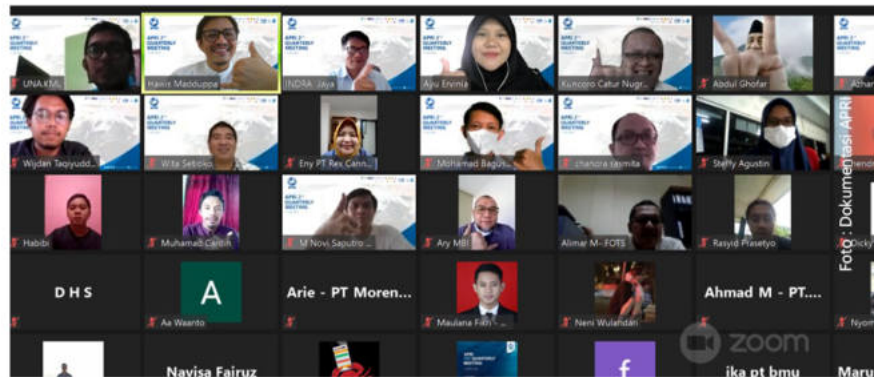


Foto : Zulfikar/Rembang

## About APRI

APRI and all members are campaigning sustainability crab harvest to the supply chain for effective impact, increasing crab recruitment through stock enhancement, collaborating with Universities to support scientific research, supporting Ministry of Marine Affairs and Fisheries to develop national Fishery Management Plan and working closely with Fishers community to establish community based fishery management. All project activities are managed in a Fishery Improvement Project (FIP), which determined as 6 FIP stages. Fishery Improvement Project will create sustainable impact to the supply chain, blue swimming crab resources and also to the critical habitats of the blue swimming crab.

## APRI Members :



## Second Quarter (Q2) Meeting in July 2021: For Sustainable Blue Swimming Crab (BSC) Efforts

July 17, 2021, APRI held a quarterly meeting, presenting extraordinary speakers, namely Mr. Trian Yunanda S.Pi, M.Sc as Director of Fish Resource Management, and Prof. Dr. Ir Indrajaya M.Sc from Komnaskajiskan to discuss the stock status of Indonesian BSC. In this event, APRI also launched the APRI Datacenter which is a web-based digital platform containing data related to the crab fishery. APRI in the midst of a pandemic, Although the meeting was conducted in the midst of the COVID-19 pandemic, APRI expected that it made contributions to the sustainable crab fisheries in Indonesia.

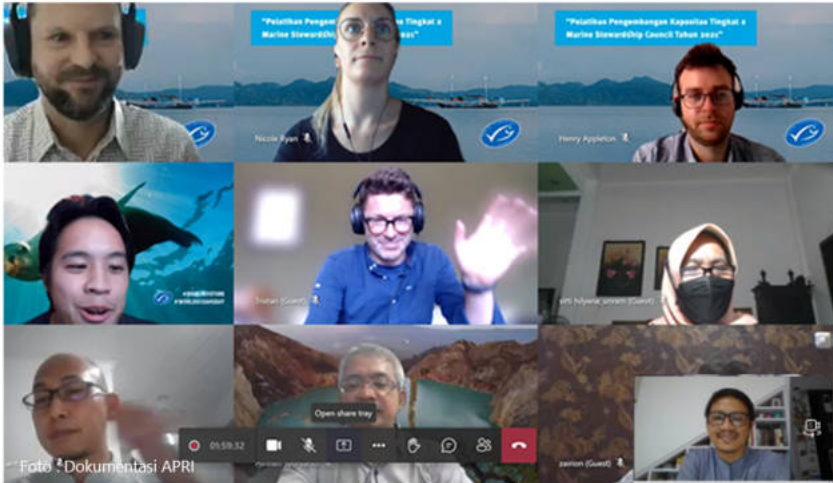
## Launching APRI DATA CENTER as Platform Good management

APRI has started data collection on crab fisheries since 2015 in Indonesia. The APRI Datacenter was launched on 17 July 2021 in coincidence with with the APRI quarterly meeting (Q2) which was witnessed by the Director of Fish Resources Management of the Directorate of Capture Fisheries of the MPA, the Chair of the Komnaskajiskan, Sustainable Envoy National Fisheries Institute Crab Council, APRI Council and Members, along with staff, enumerators and the community officers.

APRI datacenter is a web-based platform that contains various information about crab fishery and it can be easily operated on a desktop device. The platform can be visited at the address [www.apri-go-online.com](http://www.apri-go-online.com). Through this APRI Datacenter, APRI aims to provide information related to crab fisheries



Foto : Dokumentasi APRI



## Dr. Hawis Madduppa Joined the Capacity Building Training (CBT level 2) by Marine Stewardship Council

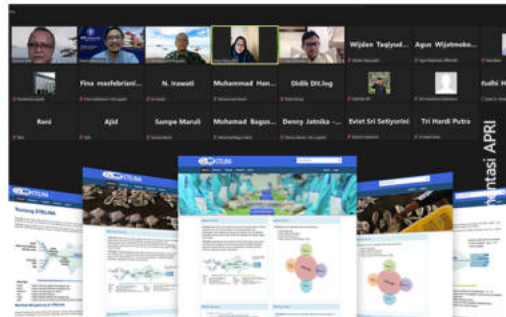
JULY 27th, 2021

Dr. Hawis Madduppa participated in capacity building training (Capacity Building Training/CBT level 2) with the Marine Stewardship Council. In this case, the crab fishery in Indonesia is in the process stage towards the MSC sustainability standard. This CBT program is part of a three-level program led by MSC staff and consultants with experience in MSC assessment.



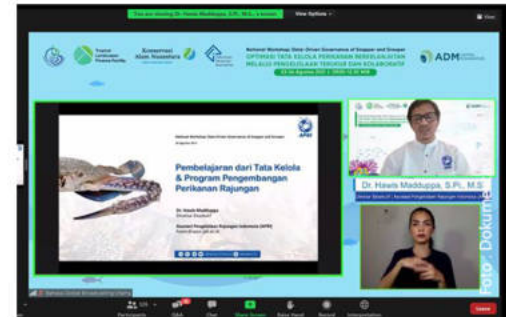
## Public Consultation Regulation By DJPT-KKP

Monday, August 2 APRI participated in a series of activities related to public consultations on non-tax state revenues from the capture fisheries sub-sector which were carried out openly. This activity was also attended by capture fisheries business actors, as well as local governments through their marine and fisheries services, academics, fisheries experts, capture fisheries associations, and media personnel.



## Integration of APRI Datacenter and STELINA as Traceability base System

On August 16, 2021, APRI together with the Logistics Directorate of KKP held a meeting related to system coordination with STELINA (National Fish Tracking and Logistics System). During the meeting, APRI explained about the APRI Datacenter which would later be able to integrate with STELINA as the basis for the traceability system in the crab fishery.



## Optimization of Fishery Governance Sustainable with Measured and Collaborative

On August 24, 2021, Dr. Hawis Madduppa as Executive Director of APRI participated in a national workshop organized by @tiffindonesia and @ykan\_id in this activity, there were many lessons related to sustainable fisheries management so that they could be learned and collaborated with each other in a measurable way to advance Indonesian fisheries.



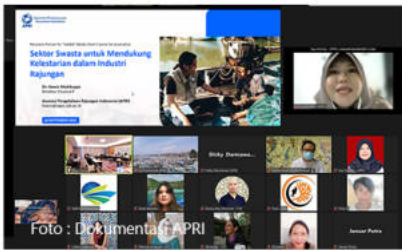
## Collaborate with APRI, Master Student of Marine Science IPB Anggini Fuji Conducting Research on Bycatch From Blue Swimming Crab Fisheries

Anggini Fuji, a student from the Bogor Agricultural University (IPB) Master of Marine Science who received research funding from the Ocean Stewardship Fund (OSF), which is a funding program from the Marine Stewardship Council (MSC). Anggini Fuji is collaborating with APRI in research activities to identify bycatch using DNA. This research will contribute to the status of crab stocks and increase understanding of the impact of fisheries on the wider environment.



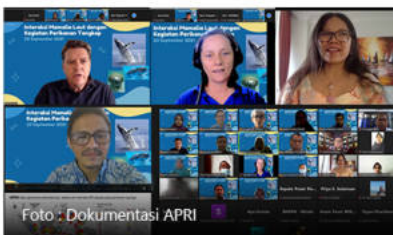
## Gedongmulyo Fisherman Received BBPBAP Crab Seeds Assistance Jepara 98,000 heads for Cultivation Development

In order to maintain the sustainability of the crabs, efforts to develop aquaculture continue to be carried out, together with the Center for Brackish Water Cultivation Fisheries (BBPBAP Jepara) which has carried out the process of hatching crabs. Gedongmulyo fishermen get the opportunity to cultivate crabs in the pilot pond cultivation in Gedongmulyo village, Kec. Lasem Rembang. Apart from seed assistance, fishermen also had the opportunity to learn about the hatchery process by BBPBAP Jepara. The total number of seeds in stocking is approximately 98,000 individuals.



## APRI FIP Presentation In "JUARA" Crab Prosperous

Saturday, September 18, 2021. APRI had the opportunity to present the fishery improvement project and support for fisheries sustainability from the industrial sector through Dr. Ayu Ervinia in a short training activity "JUARA" for media and journalists in Lampung. This activity organized by @coraltrianglecenter is an important effort in campaigning for a sustainability program by involving the role of the media and journalists.

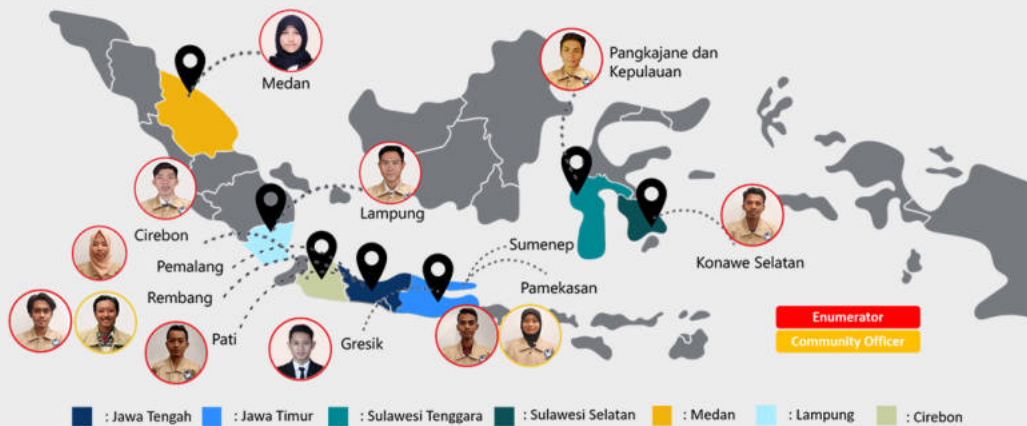


## Marine Mammal Interaction with Crab Fishing Activities

Thursday, September 23, 2021 through the executive director of APRI, Dr. Hawis Madduppa conveyed related to data collection activities bycatch/NTS by APRI enumerators. This data collection activity does not only apply to marine mammals but to all species that interact with the crab fishery.

## STOCK ASSESSMENT

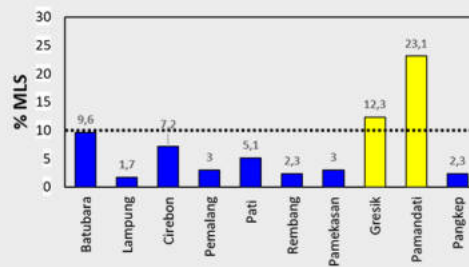
### Spatial Distribution of Crab Sampling



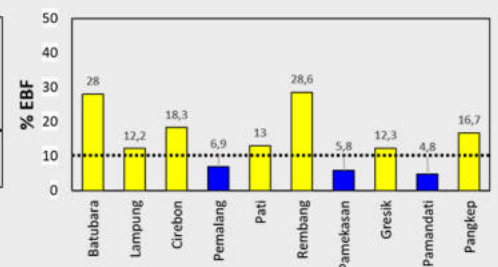
## Presentase MLS and EBF

Total Crab Sample = 61.161

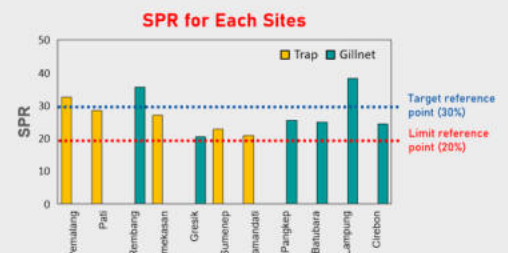
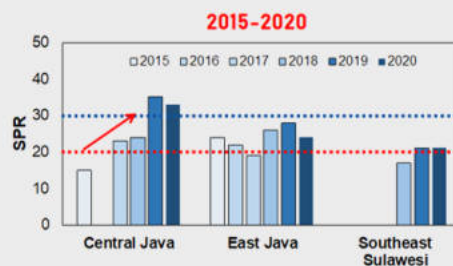
### A. MLS (Minimum Legal Size)



### B. EBF (Egg Berried Female)



## Spawning Potential Ratio (SPR)



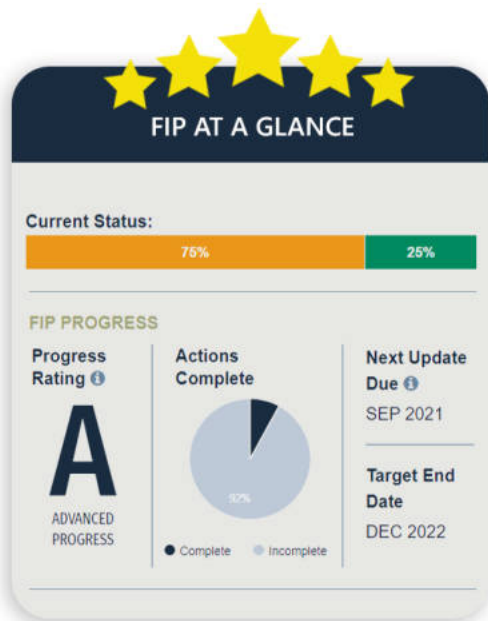
- The BSC SPR value in Indonesia is mostly above the reference point for the recruitment rate, namely SPR20%.
- Pemalang, Rembang, and Lampung reached the SPR30% reference point target.
- BSC stock status in Indonesia has improved during the 2015-2020 period.

\*Ayu Ervinia APRI Data Analyst January - August 2021



## FISHERY IMPROVEMENT PROGRAM (FIP)

The organization APRI - whose members include over 30 seafood industry businesses and processors - covers more than 85% of purchased crab in Indonesia. All members involved are working to promote not only sustainable crab harvest, but a sustainable supply chain as well. The FIP aims to support scientific research through collaborations with universities, to develop a national Fishery Management plan through a partnership with the Ministry of Marine Affairs and Fisheries, and to establish community based fishery management by working with local fishing communities. The FIP is meant to have a lasting impact on the sustainability of the fishery's supply chain, on blue swimming crab resources, and also on the ecosystem where the species is harvested.



## Indonesia FIP Status Report



### FIP Objective(s)

- Work plan and transition Indonesia Blue Swimming Crab Fisheries to MSC full assessment within the prescribed 3-years
- Change practices (no take of small crabs/juveniles, no take of eggbearing females), increase the stocks, develop policies that protect and sustain crabs (including protection of nursery ground, spawning area) by end of December 2022
- Develop a management plan for Indonesian blue swimming crab that includes community resources management that protects nursery ground; produce a control document by end of December 2018
- Implement FIP workplan that includes development of the management plan, community-based management, communication and awareness, nursery and spawning grounds protection projects, as well as a hatchery project by end of December 2018

The FIP currently at **SFP Stage 5 : Improvements on the Water** – and Progress Rating got A (Advanced Progress)

The blue swimming crab fisheries has been assessed in 2015 using the MSC's Fishery Assessment Methodology (V2.0). **Current score SG<72** MSC's standard for sustainable blue swimming crab fisheries

The blue swimming crab fisheries has been assessed using the Monterey Bay Aquarium's Seafood Watch Criteria of capture Fisheries (v2.0)

## APRI BOARD

### Supervisory Board :

Chief Supervisor : Mohammad Novi Saputro  
Member : Yoga Sadana  
Member : Ary Syaiful Bachri

Chairman : Kuncoro Catur Nugroho  
Treasurer : Wita Setioko  
General Secretary : Kuncoro Catur Nugroho\*

### FIP Organization (Fishery Improvement Project) :

Executive Director : Dr. Hawis Madduppa, S.Pi, M.Si.  
General Manager : Bambang Arif Nugraha  
Project Support I : Bunga M. Tarigan (WPP 711)  
Project Support II : Waanto (WPP 712)  
Project Support III : Hendro Wibowo (WPP 713, 714, 718)

### Staff

Office & Data Management - M. Wijdan Taqiyuddin  
Fishery progress & Public Relations - Mohamad Bagus Satria  
Science & Data Analyst - Ayu Ervinia  
CO-Management & FIP program - Azhar Slamet  
Public Awareness & Media Communication - Dicky Darmawan

### 1. Sustainable Fish Stock

- Stock status outcome (1.1.1)
- Stock rebuilding outcome (1.1.2)
- Harvest strategy (1.2.1)
- Harvest control rules & tools (1.2.2)
- Harvest strategy information & monitoring (1.2.3)
- Assessment of stock status (1.2.4)

### 2. Minimizing Environmental Impact

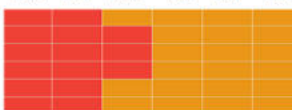
- Primary species outcome (2.1.1)
- Primary species management (2.1.2)
- Primary species information (2.1.3)
- Secondary species outcome (2.2.1)
- Secondary species management (2.2.2)
- Secondary species information (2.2.3)
- ETP species outcome (2.3.1)
- ETP species management (2.3.2)
- ETP species information (2.3.3)
- Habitat outcome (2.4.1)
- Habitat management (2.4.2)
- Habitat information (2.4.3)
- Ecosystem outcome (2.5.1)
- Ecosystem management (2.5.2)
- Ecosystem information (2.5.3)

### 3. Effective Management

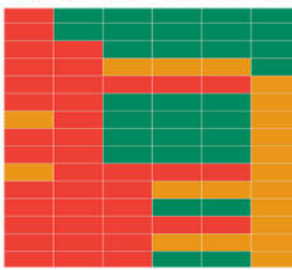
- Legal/customary framework (3.1.1)
- Consultation, roles & responsibilities (3.1.2)
- Governance/policy long-term objectives (3.1.3)
- Fishery-specific objectives (3.2.1)<60
- Decision-making processes (3.2.2)
- Compliance & enforcement (3.2.3)
- Monitoring & management performance evaluation

Score Range : <60 60-70 80+

YEAR 0 YEAR 1 YEAR 2 YEAR 3 YEAR 4 YEAR 5



YEAR 0 YEAR 1 YEAR 2 YEAR 3 YEAR 4 YEAR 5



YEAR 0 YEAR 1 YEAR 2 YEAR 3 YEAR 4 YEAR 5



FISHERY  
PROGRESS.ORG

# Milestone APRI Patners 2014-2021



2021



2020



2019



2018



2017



2016



2015



P4KSI

2014





**Asosiasi Pengelolaan Rajungan Indonesia**  
Jl. Dukuh Kupang Timur XI No. 33, Surabaya, East Java, Indonesia

 : [rajunganindonesia@gmail.com](mailto:rajunganindonesia@gmail.com)     | [@rajunganindonesia](https://www.instagram.com/rajunganindonesia) |  [www.apri.or.id](http://www.apri.or.id)