



Annual REPORT 2022

ASOSIASI PENGELOLAAN RAJUNGAN INDONESIA



© M. Cardin_Enumerator Sulawesi Selatan





– PREFACE

Ir. Kuncoro Catur Nugroho, M.M **Chairman APRI**

Assalamu'alaikum wr.wb.

All praise and gratitude we pray to the presence of Allah SWT, God Almighty. We would like to thank all APRI members who have been entrusted with carrying out the mandate to be a chairman of APRI for the 2020 - 2022 period.

In carrying out this management there are 2 (two) main programs in Management. The first program is management and members jointly discussing and finding solutions to problems in the business world, whether related to issues on the buyer's side, the US government, MMFA regulations, or other issues. While the second program is related to the sustainability program that we usually know as FIP (Fisheries Improvement Programs). These two main programs are interrelated and cannot be carried out separately.

Period 2020 - 2022 APRI members have increased by one to 18 members and have contributed 85% of the total tonnage of exports to the US market. In Q1 2021 the scientific research results of APRI enumerators show that the majority of crabs caught are > 10 cm and the percentage of crabs that lay eggs is decreasing. SECOND, that FisheryWatch, an independent international body, assessed that the Indonesian Crab FIP guided by APRI received an A grade for 4 consecutive years. THIRD, Starting in semester II 2021-2022 during the recovery period from the pandemic, sales of Indonesian pasteurized crab have decreased so that crabs as living things can reproduce better. FOURTH, crab fishing is still in the West Indonesia region, while Eastern Indonesia still has the potential to be developed for empowering the crab populist economy. FIFTH, the aspect of crab cultivation is still in the middle of the road. Crab, lobster and shrimp cultivation is growing very rapidly. We are sure that Inshaa Allah, in turn, crab cultivation will soon be present before us. We must not be late from other countries that continue to engineer cultivation technology.

The five points above must be managed properly by APRI together with stakeholders, namely the Central/Provincial/District Government, Research Institutes, Institutions/Universities, Suppliers/Mini Plants, Fishermen, Employees and all related parties. By uniting to become a unified whole, programs for nature conservation and business sustainability can be balanced and improved.

Those are the Forewords in the APRI Management Accountability Report for the 2020-2022 period which has ended today. In addition to the APRI Activity Report, we also submit the organization's Financial Report which is submitted in accordance with the principles.

Hopefully the management in the future can be better than the current management, the achievement of MSC certification is in sight, the available funds are still adequate but need clarification & transparency in managing the MSC International Standards and be accepted fairly by APRI members. Hopefully in the future Inshaa Allah we will achieve it.

We, on behalf of all APRI management for the 2020-2021 period, would like to apologize if there are things that are unsatisfactory to members. Terimakasih.....

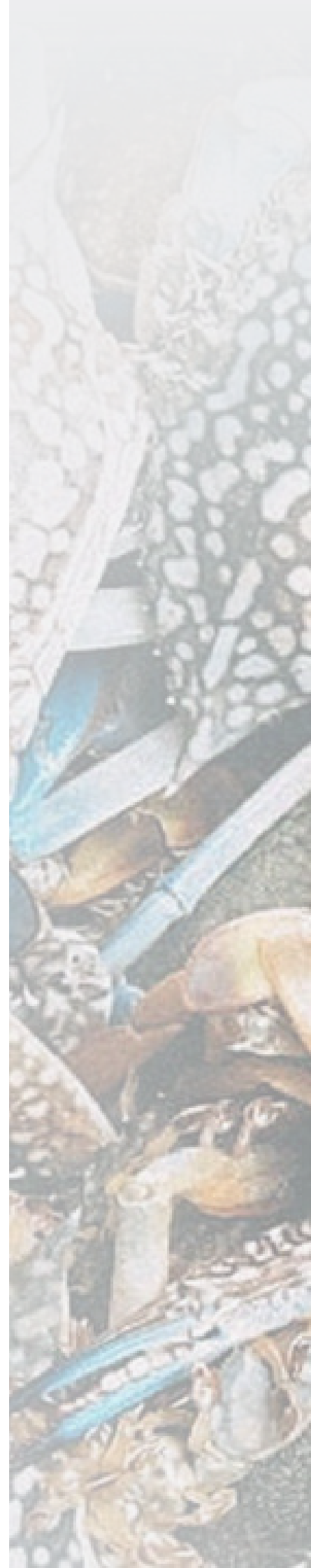
Wassalamu'alaikum wr.wb.

Surabaya, 21 October 2022

Chairman APRI



Ir. Kuncoro Catur Nugroho, M.M





Wita Setioko APRI Treasurer



**Thank you to all
members who
continue to commit together
to carry out sustainable
processing.**

Greetings to all of us,

It does not feel that APRI has entered the end of the 2021-2022 management period. We would like to thank all APRI members who have played an active role in the running of this organization. We are also grateful for the trust that has been given so that we can carry out the management for the 2021-2022 period, which without the help and support of Mr and Mrs APRI members, APRI would not have been able to go this far. We also thank all partners who have supported APRI in overseeing the sustainability of the crab fisheries and business in Indonesia.

The 2021-2022 period was passed with various conditions and challenges, including how crabs are managed in nature, organizational fluctuations, to business conditions that sometimes also fluctuate. However, with the togetherness that exists between members, these conditions can be passed well, although there are still a number of things that need to be coordinated. APRI members are crab processors who play a role in the export of Indonesian crab products which are always included in the top five export commodities with the highest value. Admittedly, the existing market is currently dominated by the United States which accounts for more than 80% of Indonesian crab exports.

In 2022, the condition of the blue swimming crab business is facing considerable challenges, where falling prices result in supply chain instability. However, APRI continues to strive so that the existing obstacles and challenges can be overcome properly. And this can be used as a milestone to be able to increase our focus on the sustainability of small crab fisheries which are a source of income for many people. Support from APRI members, including in terms of funding is invaluable considering this can be a supporting tool in carrying out APRI activities, as well as activities in order to continue to improve the welfare of the crab fisheries supply chain in Indonesia starting from fishermen, collectors, mini plants, to the

factory. It was the support that APRI members provided that was able to increase opportunities for APRI to seek and provide alternative steps in its efforts to maintain business stability.

It is realized that what we convey repeatedly is a word of thanks, and this reflects that we are very grateful for the support of our members in maintaining the stability of our beloved APRI organization. However, we also do not forget to apologize if during our time as administrators, there were many things that were not pleasing to the hearts of APRI members. And it feels like this is the closing of what we are saying, hopefully with the next management, APRI can continue to develop and improve in a better direction, and this is inseparable from all of our support.

Thank you, and best wishes to all of us.

Friday, October 21, 2022





Bambang Arif Nugraha
APRI Expert Officer



Sustainable crab is the key, sustainable will lead us to resilience and determine our success at all levels.

Bambang Arif Nugraha

APRI EVALUATION OF ORGANIZATIONAL CONSTRUCTION (2020 - 2022)

The contraction in the pasteurized crab meat market due to high supply in 2021 will have a broad impact on national production performance in 2022. Throughout 2022 the market looks sluggish because product stocks in the USA are still quite a lot. The effect of the sluggish market is quite difficult for the 18 group companies that are members of APRI which include 35 Plants, MP (more than 550 MP), the number of crab fishermen (more than 90K people) and the number of pickers (more than 185K people) throughout Indonesia. This contraction has encouraged APRI to strengthen the code of conduct or GMP Miniplants which encourages APRI members to apply the principles of food safety and precautions against CAP contamination = chloramphenicol).

Throughout 2020-2022, organizationally APRI made history by increasing the number of enumerators spread across 10 UoA (Unit of Assessment), active in formulating Comparability Finding MMPA (Marine Mammal Protection Act), increasing research activities in collaboration with Universities and BRIN (ship development refrigerated crab catchers) as well as building a development system for crablet enlargement installations at the Sidoarjo Fisheries Academy Field Station. This last activity is inseparable from the success of harvesting crabs from both semi-intensive cultivation and the silvo fishery system at BPBAP Jepara, even though the yield obtained was only around 5% of the crab seeds that were stocked for the first time in 2018. In early 2022 APRI accepted the new membership of PT Jala Crabindo International which operates in Kendari, Southeast Sulawesi.

Evaluation: Massive arrests that do not heed Permen 17/2021 in 2021 when supplies to the USA are at their peak, disrupt the carrying capacity of BSC resources, ecosystems and management. The stock status parameter is generally in a warning position, especially in WPP 711 and WPP 712 seen from the SPR (Spawning Potential Ratio), MSY (Maximum Sustainability Yield) and Komnaskajiskan recommendations

where 2 WPP red (WPP 711 and 717), 8 WPP yellow and 1 Only WPP is green (572, west coast of Sumatra).

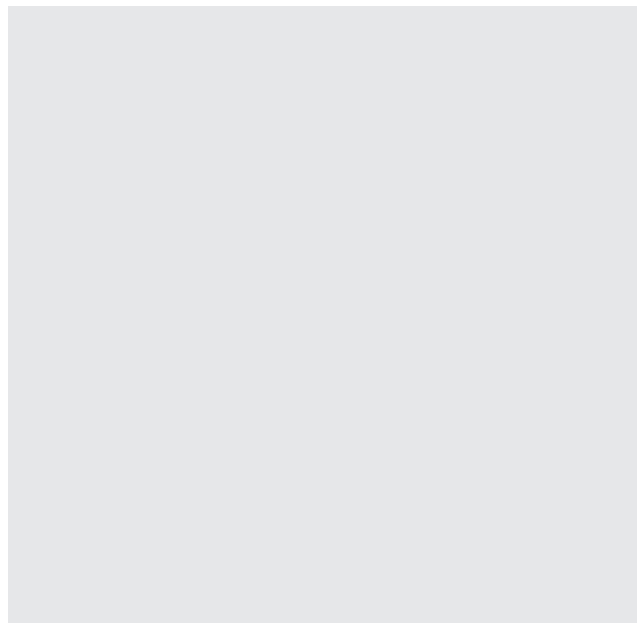
In the organizational aspect, with its FIP (Fisheries Improvement Program), APRI has been able to become an umbrella organization for all its members without having to fear physical barriers or export barriers. Obstacles faced by the code of conduct that has been drafted are not yet effective in forcing members to openly comply with the required compliance, such as avoiding visits to the FDA at MPs that supply them. It was also found in the field that non-members of APRI still freely take advantage of the benefits resulting from APRI's efforts, such as the freedom to obtain CPIB and SKP MP, the need for FIP documents, etc.

Solution: APRI institutionally has assisted the government in achieving SKP (GMP) certification, CPPIB Miniplant and managing small crab fishing boats. APRI also assists the Directorate of SDI MMFA in discussing measurable fisheries applications in crab catching. The Control Document has been disseminated massively together with the APRI Apps tool in line with the concept of INDUSTRY 4.0 (smart industry). The Harvest Strategy, which is the key to success in achieving MSC certification, needs to be implemented immediately after the Control Document is successful.

APRI must also be able to protect its members in terms of business survival, but its SOPs must be sharpened. For example, a member who does not want to accept an audit or visit from an external party must be given a POINT OF VIOLATION which must affect the size of the membership that must be paid until the heaviest one is recommended to be expelled from APRI membership. Support for openness, equality, justice and fairness behavior in each member of APRI must be proven by their seriousness in helping position APRI as an organization that is a "mutual partnership" for both the government, academics, NGOs and the fishing community in general.

On the other hand, APRI must be able to encourage the independence of fishermen and MPs in terms of managing the crab fishery, both in providing institutional financing in the form of microfinance or sharia schemes that are able to increase the ability of fishermen to operate their business independently. The trading system for crab meat in several places is also still controlled by brokers, making it difficult for the distribution of welfare to be enjoyed directly by fishermen and agents/collectors. The solution to this problem is to continue to invite fishermen to learn how to do market analysis according to their level of ability.

Implementation of a sustainable business that refers to SIMP (Seafoods Import Monitoring Program) and compliance with MMPA (Marine Mammal Protection Act) regulations must start from a sense of "comfort" from business people so that this industry is not left to fight alone without protection from the government, such as the entry of the pasteurization industry. crab on the negative investment list. The seriousness of the government or competent authority to improve fishing institutions in understanding the rules and law enforcement, especially in fulfilling traceability which is the soul of SIMP itself. Once again, support of openness must be prioritized.





Dr. Ayu Ervinia Executive & Research Director

 **Blue Swimming Crab (*Portunus pelagicus*) is one of the sources of Indonesia's marine wealth, therefore it is important to manage it in a sustainable manner by involving industry based scientific.**

The FIP is currently at SFP Stage 5: Improvement in Water – and an A Grade (Advanced Progress) The crab fishery was assessed in 2015 using the MSC Fisheries Assessment Method (V2.0). The current score is **SG<72 the MSC standard for sustainable swimming crab fisheries.**

FIP development at this time reached 64% of the “Green” indicator and 36% of the “Yellow” indicator and did not get a “Red” indicator. APRI as the executor of FIP for crab fisheries has started since 2012 until now. In the 2020-2022 period several indicators have increased, such as the Environmental Impact Indicator (P2) with 12 “Green” colored indicators such as NTS (Non Target Species), ETP Species. Improvements to Stock Assessment (P1). In SPR, MLS, EBF, and CPUE data collection reports. And don't forget that the Effective Management (P3) indicator has also increased.

APRI has also published the results of research conducted by the APRI Board, Staff and Enumerators in the International Seminar (ISOSS IPB 2022) totaling 15 Papers related to crab fisheries.

APRI is also active in various activities for sustainable crab fisheries from Government, Industry, Universities and the entire Supply Chain in crab fisheries. Hopefully in the future the crab fisheries in Indonesia will get the title of sustainable.



Data Collection and CO-Management

Data collection was carried out at 10 location points in Indonesia (Medan, Lampung, Cirebon, Pemalang, Pati, Rembang, Gresik, Madura, Pangkep, Konawe Selatan) and there was CO-Management in Rembang and Pamekasan

FIP

Update APRI's FIP via
[Fisheryprogress.org](https://fisheryprogress.org)

APRI as the FIP project leader in the blue swimming crab fishery will continue to improve the indicators on the FIP for sustainable fisheries

Portunus pelagicus
Blue Swimming Crab




Blue Swimming Crab

All project activities are managed in the Fishery Improvement Project (FIP), which is defined in 6 stages of FIP. The Fisheries Improvement Project will create a sustainable impact on the supply chain, blue crab resources as well as the ecosystem where the blue crab is caught.



Scan QR Code
or visit: www.apri.or.id

Photo : Pahad Maulana_Enumerator Gresik



The greatness of a nation can be judged from how the nation manages its natural resources

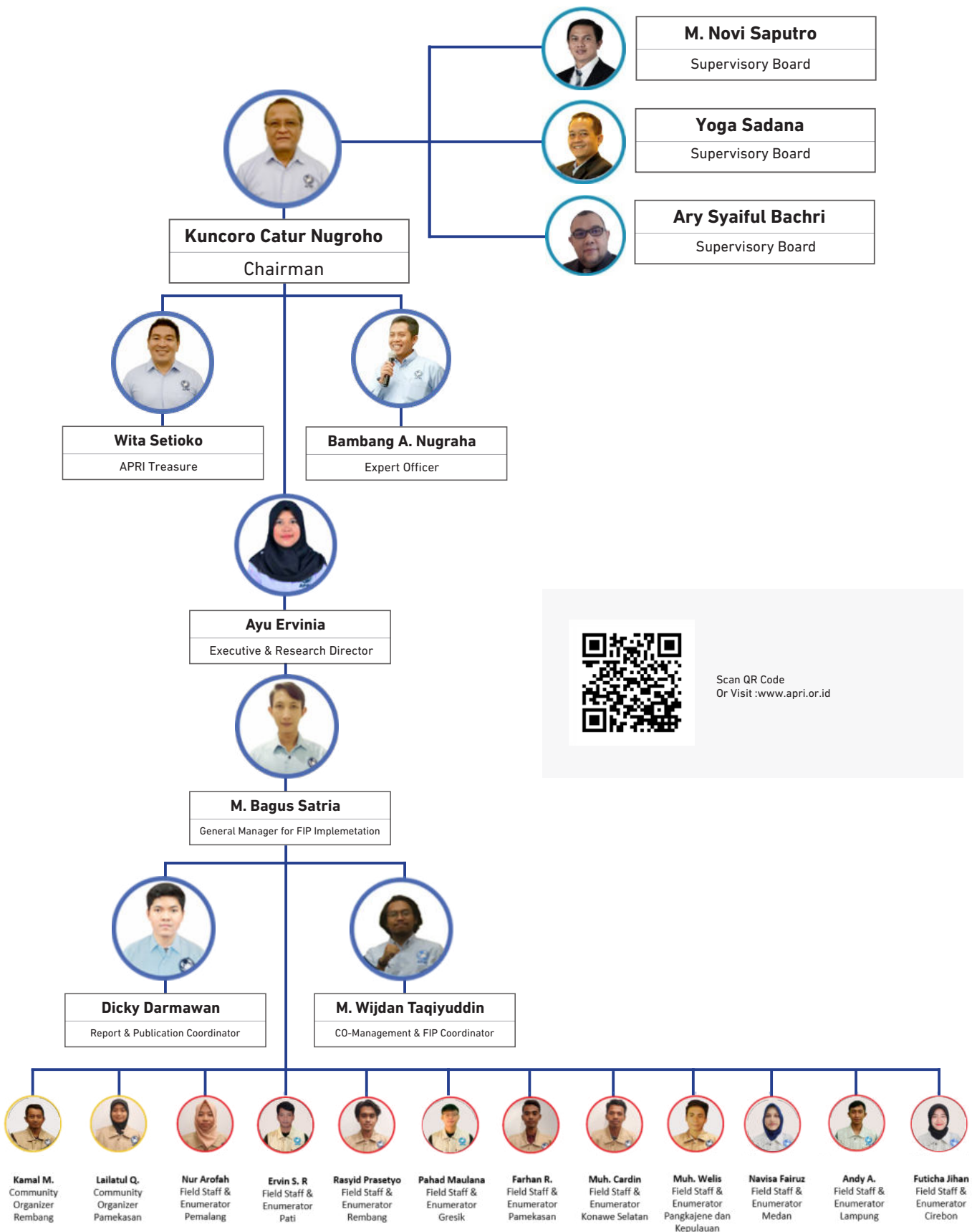
- Mahatma Gandhi

Sustainable and Traceable

www.apri.or.id

01 PREFACE	II
02 TABLE OF CONTENT	III
03 ORGANIZATIONAL STRUCTURE	1
Organization Period	2
04 APRI MEMBERS	3
05 APRI FOCUS	4
06 FIP AT GLANCE	5
FIP Goals	6
FIP Status	7
FIP Indicator	8
07 APRI ACTIVITY 2021-2022	11
P1 - Sustainable Fish Stock	11
P2 - Minimazing Environmental Impacts	21
P3 - Effective Management	31

ORGANIZATION STRUCTURE



Scan QR Code
Or Visit :www.apri.or.id

Organization Period



APRI was established on July 6, 2007 in Jakarta, with the aim of initiating the management of blue swimming crab and its natural resources in a fair and wise manner, so that it benefits future generations and is economically and ecologically sustainable.

2020

National Conference 2020
APRI Chairman Election

The 2020 APRI National Conference (Munas) was held online due to the COVID-19 pandemic but without reducing the value of the activity.

2021

Ocean Stewardship Fund
In-Transition to MSC

APRI was able to obtain verification of the "In-Transition MSC Program" and obtain funding through the "Ocean Stewardship Fund (OSF)".

2022

Appreciation
FIP Rajungan

MSC gave appreciation in the form of an award plaque by Mr. Patrick Cleo as Regional Director of Asia Pacific MSC to Mr. Wita Setioko as APRI representative.

APRI MEMBERS



MEMBERS
18

85%

of Blue Swimming Crab export come from Indonesia

About 85% of crab exports come from APRI members. In the 2020-2021 period, the number of APRI members will be 18 members, namely PT. Jala Crabindo International in Kendari, South Sulawesi.

35/40

Processor Plant in Indonesia are APRI Member

Processor Plant (UPI) that have joined as part of APRI are 35 UPI spread throughout Indonesia, most of them are on the island of Java, while Sumatra occupies the second position

APRI FOCUS

01. TRACEABILITY



Tracing system through control documents to all Fish Processing Units from Miniplant to UPI

02. ASSESTMENT AND IMPROVEMENT STOCK



Supporting the Stock Assessment Program in the Java Sea by implementing SPR

03. CO-MANAGEMENT



Completing the National Fisheries Management Framework through a community or group approach in an area

04. SUSTAINABLE FISHING GEAR



Reviewing and implementing environmentally friendly fishing gear in the blue swimming crab fishery

05. INFORCEMENT AND COMPLIANCE



To improve fisheries policy enforcement and compliance through supply chain assessments

06. COMMUNITY EMPOWERMENT



Empowering and organizing fishing communities to increase the awareness and independence of fishing groups



Blue swimming crab (*Portunus pelagicus*) become a source of livelihood for fishermen in Pamekasan, with the assistance of APRI the fishermen of KUB Berkah Capit Biru have realized the importance of sustainability.

One of the programs in the effort to preserve crabs is the "Crab Apartment" as an effort to support PERMEN KP No. 17 of 2021 concerning small crab and laying outside.



25 Sep 20
7.22935774S 113

Kecamatan
Kabupaten

Photo : Lailatul_CO-Management_Pamekasan

FISHERY IMPROVEMENT PROJECT (FIP) AT A GLANCE

FIP aims to support scientific research through collaboration with universities, to develop a national Fisheries Management plan in partnership with the Ministry of Maritime Affairs and Fisheries, and to establish community-based fisheries management in collaboration with local fishing communities. FIPs are intended to have a long-term impact on the sustainability of the fishery supply chain, blue crab resources, as well as the ecosystems where these species are caught.



Start from 2007 until now, the development of FIP related to crab fisheries continues to develop for better improvement.



More Info :

[Fisheryprogress.org](https://fisheryprogress.org)

Scan QR code to get information about FIP Blue Swimming Crab Fisheries in Indonesia.



FIP has three indicators towards sustainable fisheries, each indicator contains important points. APRI as the FIP implementer continues to work with members to implement various FIP activities.

M. Bagus Satria - General Manager FIP Implementation

FIP GOAL

Fishery Improvement Project

APRI - whose members cover more than 30 seafood processing industries - accounting for more than 85% of crab processing in Indonesia. All members involved are working to continuously promote sustainable crab fishing, as well as sustainable supply chains.

Berikut adalah tujuan dalam menjalankan program perbaikan perikanan rajungan (FIP)



The blue swimming crab fishery work plan and transition towards a full MSC assessment within 3 years according to what has been determined



Changing practices (not taking small/juvenile crabs, nor spawning crabs), increasing stocks, developing policies that protect and maintain sustainable crabs (including protection of nursery grounds, spawning areas) by the end of December 2022



Developing an Indonesian blue swimming crab management plan protecting nursery grounds; produce control documents until the end of December 2022



Implement a FIP work plan that includes development of a management plan, management project, community-based communication and awareness, nursery and hatchery, and hatchery projects by the end of December 2022.



FIP ASSESSMENT STATUS

The FIP assessment will continue to be updated along with developments and challenges in fisheries conditions, at this time APRI's FIP is rated "A"

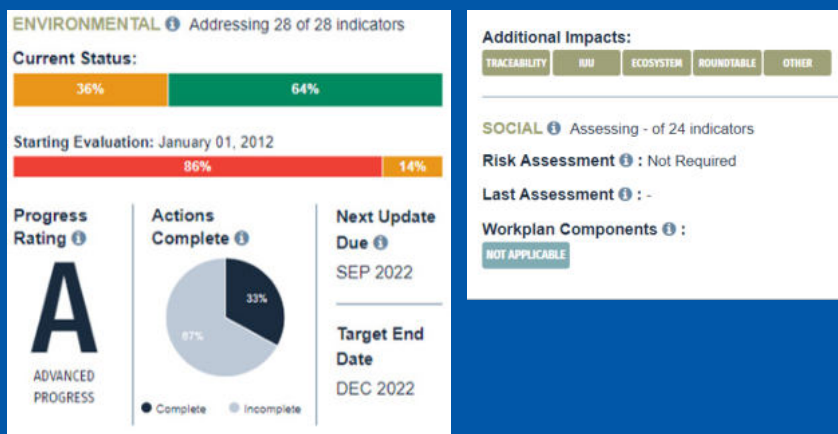


FIP Currently at SFP Stage 5: Improvements to Waters and Progress Rating gets **A (Excellent Progress)**



The blue swimming crab fishery was assessed in 2015 using the MSC Fisheries Assessment Methodology (V2.0). Current score SG < 72 MSC standard for sustainable swimming crab fisheries

FIP AT GLANCE



28 Indicator FIP
Fisheryprogress.org

The three main points in the FIP are; Stock Sustainability (P1), Environmental Impact (P2), Effective Management (P3) as outlined in 28 FIP indicators

FIP INDICATOR

P1 - Sustainable Fish Stock

- Stock status outcome (1.1.1)
- Stock rebuilding outcome (1.1.2)
- Harvest strategy (1.2.1)
- Harvest control rules & tools (1.2.2)
- Harvest strategy information & monitoring (1.2.3)
- Assessment of stock status (1.2.4)

Year 0	Year 1	Year 2	Year 3	Year 4	Year 5	Year 6	Year 7
Red	Red	Orange	Orange	Orange	Orange	Orange	Orange
Red	Red	Red	Orange	Orange	Orange	Orange	Orange
Red	Red	Red	Orange	Orange	Orange	Orange	Orange
Red	Red	Red	Orange	Orange	Orange	Orange	Orange
Red	Red	Orange	Orange	Orange	Orange	Orange	Orange
Red	Red	Orange	Orange	Orange	Orange	Green	Green

P2 - Minimizing Environmental Impacts

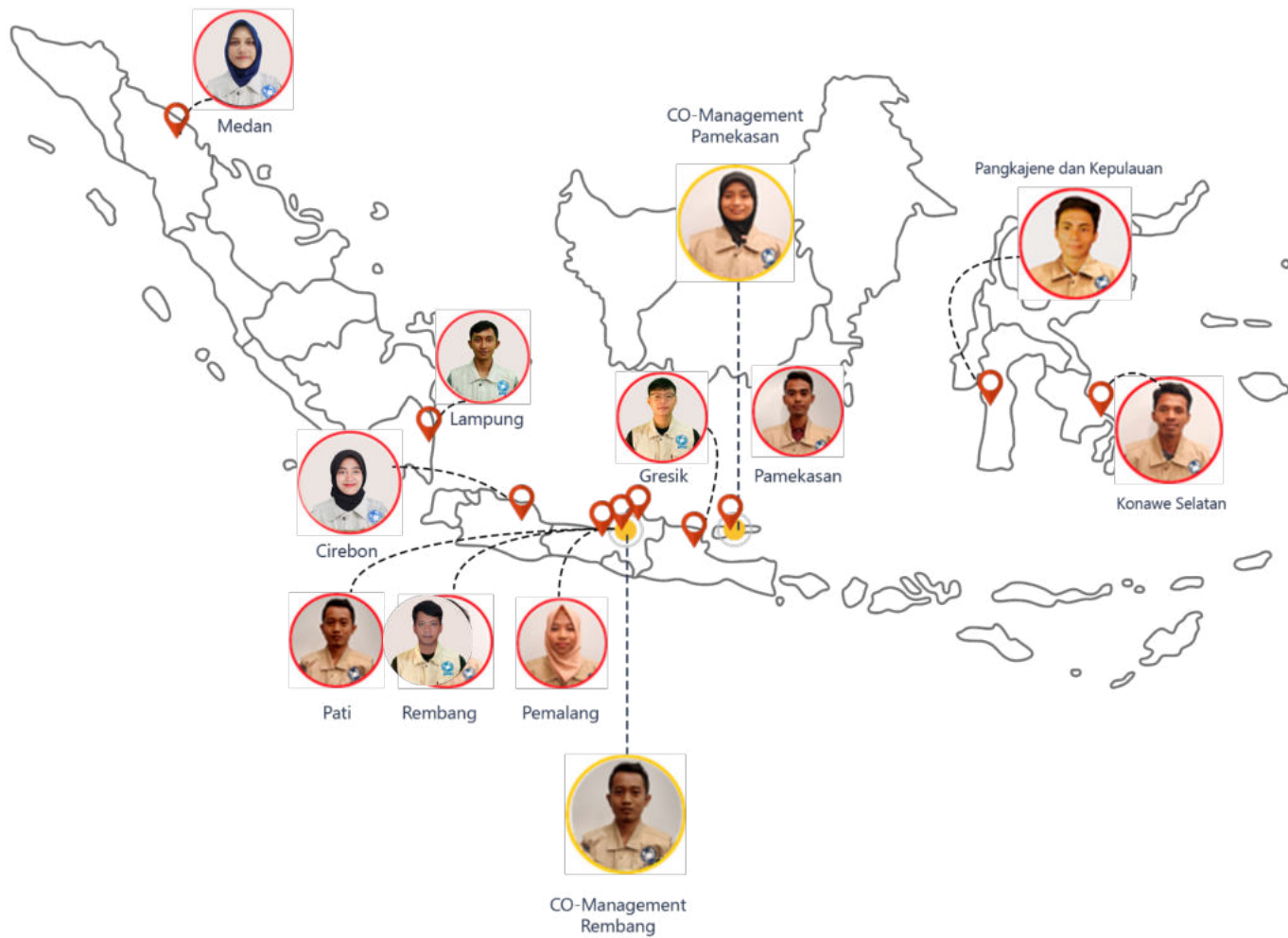
- Primary species outcome (2.1.1)
- Primary species management (2.1.2)
- Primary species information (2.1.3)
- Secondary species outcome (2.2.1)
- Secondary species management (2.2.2)
- Secondary species information (2.2.3)
- ETP species outcome (2.3.1)
- ETP species management (2.3.2)
- ETP species information (2.3.3)
- Habitat outcome (2.4.1)
- Habitat management (2.4.2)
- Habitat information (2.4.3)
- Ecosystem outcome (2.5.1)
- Ecosystem management (2.5.2)
- Ecosystem information (2.5.3)

Year 0	Year 1	Year 2	Year 3	Year 4	Year 5	Year 6	Year 7
Red	Green	Green	Green	Green	Green	Green	Green
Red	Green	Green	Green	Green	Green	Green	Green
Red	Red	Green	Green	Green	Green	Green	Green
Red	Red	Orange	Orange	Orange	Green	Green	Green
Red	Red	Red	Red	Red	Orange	Orange	Orange
Red	Red	Green	Green	Green	Orange	Green	Green
Orange	Red	Green	Green	Green	Orange	Green	Green
Red	Red	Green	Green	Green	Orange	Green	Green
Red	Red	Red	Red	Red	Orange	Green	Green
Red	Red	Red	Orange	Orange	Orange	Green	Green
Red	Red	Red	Red	Red	Orange	Orange	Orange
Red	Red	Red	Green	Green	Orange	Green	Green
Red	Red	Red	Green	Green	Orange	Green	Green

P3 - Effective Management

- Legal/customary framework (3.1.1)
- Consultation, roles & responsibilities (3.1.2)
- Governance/policy long-term objectives (3.1.3)
- Fishery-specific objectives (3.2.1)
- Decision-making processes (3.2.2)
- Compliance & enforcement (3.2.3)
- Monitoring & management performance (3.2.4)

Year 0	Year 1	Year 2	Year 3	Year 4	Year 5	Year 6	Year 7
Orange	Red	Orange	Green	Green	Orange	Green	Green
Red	Red	Orange	Green	Green	Green	Green	Green
Orange	Orange	Orange	Green	Green	Green	Green	Green
Red	Red	Orange	Orange	Orange	Orange	Green	Green
Red	Red	Red	Orange	Orange	Orange	Orange	Orange
Red	Red	Orange	Orange	Orange	Orange	Orange	Orange
Red	Red	Orange	Orange	Orange	Green	Green	Green



01. MEDAN

Navisa Fairuz

02. LAMPUNG

Andy Azis Surya Putra

03. CIREBON

Futicha Jihan

04. PEMALANG

Nur Arofah

05. PATI

Ervin Saiful Rizal

06. REMBANG

Ervin Saiful Rizal

07. GRESIK

Pahad Maulana

08. PAMEKASAN

Farhan Ramadhan

09. PANGKAJANE KEP.

Muh. Wellis

10. KONAWE SELATAN

Muh. Cardin

CO-MANAGEMENT REMBANG

Kamal Mustabiq

CO-MANAGEMENT PAMEKASAN

Lailatul Qomariyah



LOCATION APRI DATA COLLECTION



APRI will continue to collect data on the crabs as long as the blue swimming crabs are still around, for sustainable management.

Data Type : Crab size - carapace width (mm) and weight (g), sex Male Female), Gonadal maturity level (1,2,3)

Number of Samples : Minimum 700 female crabs per month

APRI ENUMERATOR



TARGET SPECIES

Portunus pelagicus



NTS (NON TARGET SPECIES)

NTS A species that is not intentionally targeted for catch

10

Enumerators data collection location

- FMA 571 : Batubara
- FMA 712 : Lampung, Cirebon, Pematang, Rembang, Pati, Gresik, Pamekasan
- FMA 713 : Pangkajene dan Kepulauan
- FMA 714 : Konawe Selatan

2

CO- Management APRI located in Rembang and Pamekasan

APRI also conducts evaluation activities twice a month as a form of monitoring data collection, APRI enumerators also receive training every year to increase the capacity of APRI enumerators in crab data collection.



APRI ACTIVITY 2021-2022



Enumerator Activities and CO-Management Refreshment Semarang, 12-14 November 2021.

Semarang, 12-14 November 2021. At the opening this was carried out by APRI Executive Director Dr. Hawis Maddupa as a “refreshment” activity for APRI enumerators and for upgrading the capacity of APRI enumerators in crab data collection.

Mr. Syahril Abd Raup, S.T, M.Sc as a representative from PSDI - KKP provided an explanation of the KKP E-Logbook for catches to APRI enumerators which will later be integrated with APRI’s landing report data.

Next, the presentation on the stock study in the WPPNRI area by Prof. Indra Jaya as Chairman of KOMNASKAJISKAN where WPP 712 has a healthy (green) stock condition. Dr. Ir. Zairion, M.Sc participated in providing knowledge regarding the bioecological characteristics of blue swimming crab to refresh the APRI enumerator training. At the end of the event, closed with the presentation of Dr. Ayu Ervinia as APRI’s data analyst on analysis of swimming crab life history data parameters at WPPNRI.

Second Day of APRI Refreshment Enumerator and Co-Management Activities. The activity continued with a presentation on the importance of data collection and management of by-catch data (NTS/Non Target Species) by Dr. Hawis Maddupa. One of the skills that must be possessed by enumerators and co-management is about communication, therefore the need for a communication strategy described by Mr. Bambang Arif Nugraha.

The closing activity was training on measuring the biological characteristics of swimming crabs (carapace width, sex, and gonadal maturity level) and continued with “Fun and Games” by APRI enumerators.



Picture 1. Measurement training activities crab biological characteristics

KKP Harvest Strategy (HS) and Regional Harvest Control Rule (HCR). East Java (WPPNRI 712)



March 3, 2020. The Ministry of Maritime Affairs and Fisheries officially launched the book “Harvest Strategy for WPP 712 Blue Crab” in Jakarta. APRI played an active role in preparing the Harvest Strategy which was held in 7 meetings. The long journey in the preparation of HS which began in 2018 until late 2020.



The implementation of HS activities was carried out in WPP 712, precisely in East Java, considering that East Java as an area has quite high fishery potential productivity. On Friday 5 November 2021 the East Java provincial crab fisheries management meeting was held online and offline.

Through the East Java DKP Service Representative, Evy Afianasari, ST, MA (Secretary of the East Java DKP) supported the action plans that had been prepared and agreed upon. On this occasion Dr. Hawis Madduppa as Executive Director of APRI has explained the rules for controlling crab utilization.



At this meeting the main points of the action plan and rules for controlling the use of blue swimming crab in East Java Province were agreed. This activity was also attended by several academics, provincial and district DKP, Dr. Ir. Besweni, M.Sc (DJPT-KKP), BKIPM, PMP2KP, Marine Stewardship Council (MSC), industry players, as well as APRI CO-Management and Enumerators and other supporting partners.

The follow-up activity was held by the APRI Board regarding the sustainable crab management program in East Java. The Head of the East Java Maritime and Fishery Service, Dr. Ir. Dyah Wahyu Ermawati, MA. East Java is one of the provinces with the highest exports of this crab commodity, so APRI held discussions together for the synergy of programs for sustainable crab fisheries management.

Picture 2. Arrange drafting activities HS and HCR

This activity was attended by Dr. Ir. Dyah Wahyu Ermawati, MA (Kadis KP), Mr. Alan Wahyu Putra, SSTP. MM, Ir. Nurwahidah, M.AP (Head of P3KP), Ms. Wahyuni Lestari (Kasie SDI Arrest), as well as the APRI Board and Director of MSC Indonesia Hirmen Syofyanto.

Efforts to Preserve Blue Crab in the Crab Apartment and Monitoring and Repairing the Apartment (Rembang - Pamekasan)



Picture 3. Monitoring activities by APRI's CO-Management at the Crab Apartment

Development, Monitoring, and Repair of Crab Apartments by CO-Management for Assisted Fishermen

Efforts to preserve natural crabs are carried out by fishermen assisted by APRI in an effort to support the Implementation of Minister of Maritime Affairs and Fisheries Regulation No. 17/PERMEN-KP/2021 Regarding the prohibition of catching small crabs and/or laying eggs. This activity also supports the Catch It Back Before 5 Minutes Movement #GTK5Minute which has been socialized by Enumerators and CO-Management.



30 Sep 2022 16:00
 7 2291 1359S 113.4992E
 Pac...
 Kecamatan Pader...
 Kabupaten Pame...
 Jawa...





Picture 4. The symbolic activity of handing over the crab seeds by representatives of DKP East Java

Enlargement Training and Trial Activities Blue swimming crab (Pamekasan - Rembang)

APRI Holds Training on Cultivating Cultivation Trials in Pagagan Pamekasan Village Together with the Jepara Brackish Water Aquaculture Center (BBPBAP) as a guest speaker giving presentations regarding crab hatchery and enlargement.

This activity is also supported by the East Java Maritime and Fisheries Service and the Pamekasan Regency in an effort to support sustainable crab fisheries and improve the welfare of crab fishermen.

A total of 5,000 crab tail seeds were symbolically given by Ms. Wahyuni Lestari as a representative from DKP East Java to fishermen assisted by APRI, namely KUB Berkah Capit Biru. This activity was attended by APRI Staff, Enumerators, Fisheries Extension, BBPBAP Jepara, East Java DKP, Pamekasan DKP, and Blue Capit Berkah Fishermen.

In addition, this enlargement trial activity was also carried out in Rembang. The total number of seeds in stocking is approximately 98,000 fish, the stocking process is carried out by fishermen and water quality checks are carried out to monitor the condition of the crab seeds.

This activity was carried out with APRI CO-Management Zulfikar along with extension workers from the KKP and Gedongmulyo Fishermen.





the existence of seed assistance and efforts to enlarge this crab can make fishermen have the enthusiasm and responsibility in protecting the ecosystem of marine catches.

**Lailatul Qomariyah -
CO-Management Pamekasan**

Jepara BBPBAP Cultivation Innovation Development Activities - APRI - Sidoarjo Maritime Fisheries Polytechnic



Thursday, 11 August 2022. APRI has made a visit to the Maritime Affairs and Fisheries Polytechnic (POLITEKNIK KP) Sidoarjo to follow up on a collaborative program with academics to support efforts for crab fisheries to develop and be sustainable. Mr Ir. Kuncoro Catur Nugroho M.M has given a presentation regarding the objectives and planned activities of the visit in front of the Board of Directors of the Sidoarjo KP Polytechnic and the entire team.



Saturday, September 24 2022 continued with a joint discussion regarding the development of innovation and technology for sustainable crab fisheries with the Sidoarjo Maritime Fisheries Polytechnic.



Next, Tuesday, October 4 2022. APRI accompanied by representatives of the Sidoarjo KP Polytechnic visited BBPBAP Jepara regarding technical discussions for programs to improve Indonesian crab fisheries. This activity was well received by Mr. Eddy Nurcahyono, S.Pi and Mr. Agus Setiadi, SH. In this technical discussion there are important points to support the sustainability of blue swimming crab with pentahelic collaboration involving academics and the government.



Picture 5. Cultivation Planning Activities for Crab Cultivation

Launching APRI Data Center (www.apri-go-online.com)



Picture 6. Screening of the Datacenter Website Launching Video

Launching of APRI Data Center as a data center for crab fisheries traceability.



Data is very important in making appropriate and efficient management decisions.

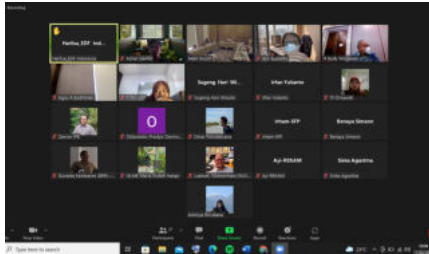
Alm. Dr. Hawis Madduppa

APRI's data center is a web-based platform that can be operated on a desktop device that contains various information on crab fisheries data. Platform that can be visited with the address www.apri-go-online.com.

The APRI Data Center was launched on July 17 2021 at the APRI quarterly meeting (Q2) which was witnessed by the Director of Fish Resources Management of the KKP Capture Fisheries Directorate, Chair of Komnaskajiskan, Envoy of the National Crab Council of the National Fisheries Institute, APRI Board and Members, and staff. Enumerators and Stakeholders.

Users can view data, namely data on export volume, catch volume, number of mini plants, number of fishermen, number of vessels, and number of fishing gear. Users can also see the distribution of data in each district/city, and can compare data trends between two years of data whether there is a decrease or increase.

Focus Group Discussion Related to Data Collection for Blue swimming crab in Demak, Central Java



APRI Attends Stakeholder Meeting related to Data Collection on Crab Fisheries in Demak Regency On February 16 2022, Zulfikar represents APRI in data collection activities for crab fisheries in Demak Regency. The importance of data collection is a very basic requirement in determining the management of small crab fisheries.

Optimization of Data Collection by the Directorate General of Capture Fisheries (DJPT) Ministry of Maritime Affairs and Fisheries



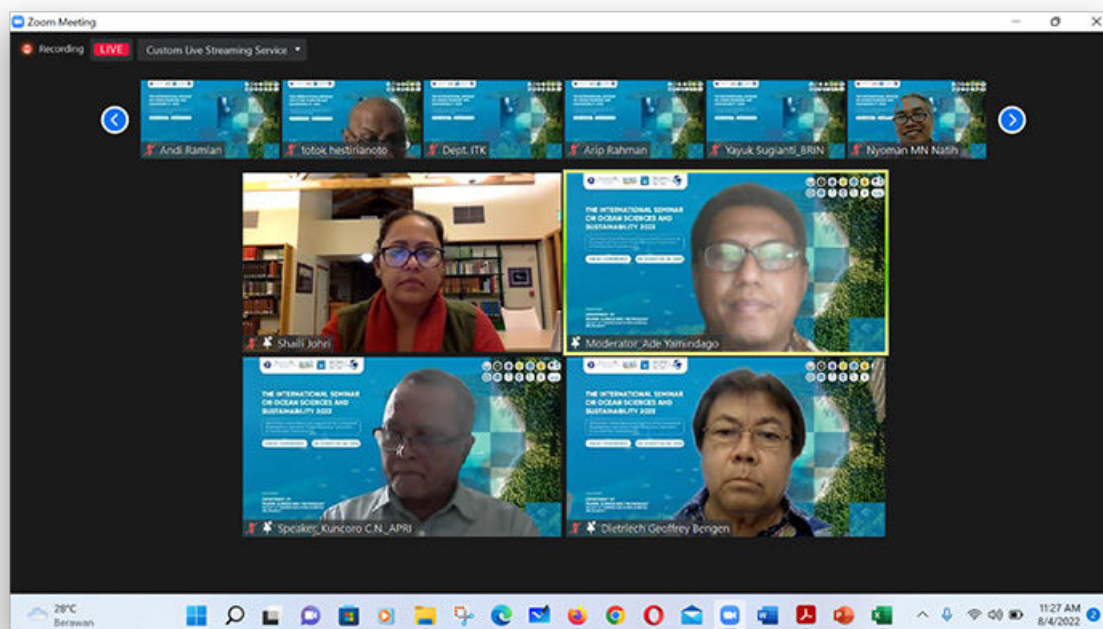
APRI's Presentation Regarding Data Collection on the Crab Fishery in the Discussion of 2021 Capture Fisheries Stakeholders Data by the DGPT-KKP. Thursday, 24 February 2022. Dr. Hawis Madduppa as Executive Director of APRI explained regarding the crab fishery data collection conducted by APRI. "One of APRI's focuses is data collection where APRI has been routinely collecting data since 2014 which can be seen through the Fisheryprogress.org portal," said Dr. Hawis Madduppa in the presentation.

APRI Attends Invitation to FGD Draft of Data Collection Optimization Operations with the KKP E-Logbook with STELINA




Thursday, 23 June 2022. APRI had the opportunity to attend an FGD regarding optimization of data collection carried out by TLFF Indonesia together with the Directorate General of Capture Fisheries (DJPT) in Bogor. On this occasion APRI supported data collection optimization programs such as the KKP E-Logbook and synchronization with STELINA.

15 APRI Research Papers published through the International Seminar on Ocean Sciences and Sustainability 2022 (ISOSS 2022)



Publication of APRI data collection results in the ISOSS 2022 International Seminar for Indonesian fisheries

 The blue swimming crab fishery is one of the high-value commodities. This scientific publication is a form of APRI's work

APRI actively participates in international seminar activities organized by the Department of Marine Science and Technology, IPB University. A total of 15 papers have been registered and presented by APRI at the event.

Thursday, 4 August 2022. Mr. Ir. Kuncoro Catur Nugroho, M.M as Chair of APRI had the opportunity to be a speaker and deliver a presentation regarding the concept of "Blue Economy in Crab Fisheries". Friday, August 5 2022. 15 of these papers were presented at the event. The paper was presented by the APRI TEAM (Enumerators, CO-Management, APRI Youth 2020 Participants, and APRI Staff)

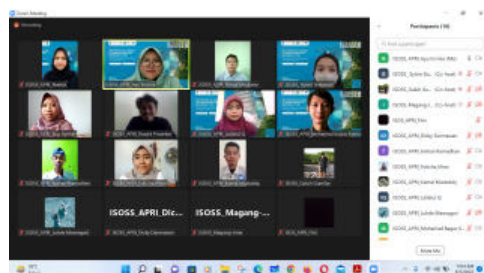
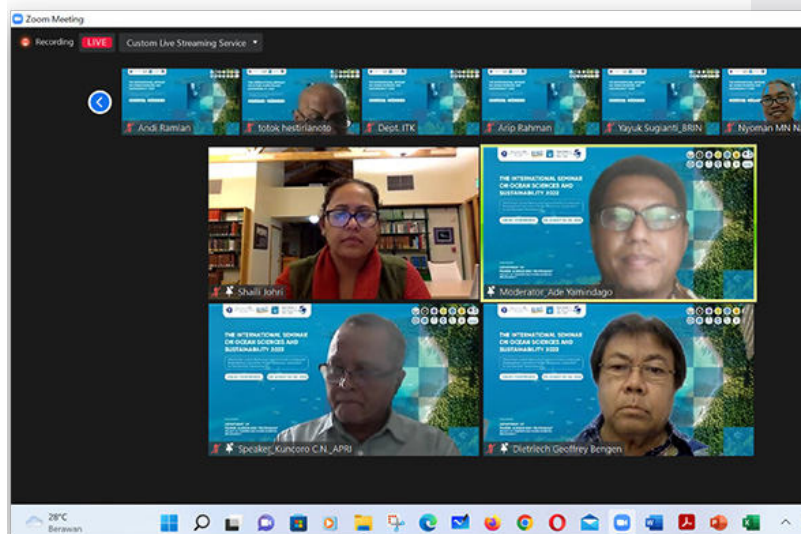
This activity is a form of APRI's support in supporting management based on **scientific business**.



ISOSS 2022 Activities: Blue Economy in Crab Fisheries

Thursday, 4 August 2022. Mr. Ir. Kuncoro Catur Nugroho, M.M as Chair of APRI had the opportunity to be a speaker and deliver a presentation regarding the concept of "Blue Economy in Crab Fisheries".

APRI actively participates in national seminar activities organized by the Department of Marine Science and Technology, IPB University. A total of 15 papers have been registered and presented by APRI at the event.



15 Research Titles for the 2022 ISOSS International Seminar Publication

- 1. Blue economy conceptual model and implementation in the blue swimming crab fishery management in Indonesia** (Kuncoro Catur Nugraha, Ayu Ervinia, Mohammad Bagus Satria)
- 2. Composition of Lost and Discarded Fishing Gear (Ghost Fishing) in the Blue Swimming Crab Fishery in Rembang, Central Java** (Ridho Zulfikar Wicaksono, Mohamad Bagus Satria, Rasyid Prasetyo, Dicky Darmawan)
- 3. Improving Size and Selectivity of Blue Swimming Crab *Portunus pelagicus* by using Collapsible Trap with Escape Vents in Pamekasan, Madura Island** (Farhan Ramadhan, Muhammad Wijdan Taqiyuddin, Mohamad Bagus Satria, Kuncoro Catur Nugroho, Wita Setioko)
- 4. Diversity of Non-Target Species on Blue Swimming Crab *Portunus pelagicus* Gillnet Fishery in Grogol, Cirebon** (Mohamad Bagus Satria, Habibi Ahmad, Ayu Ervinia, Kuncoro Catur Nugroho, Wita Setioko)
- 5. Diversity of Non-target Species on Blue Swimming Crab *Portunus pelagicus* Collapsible Trap Fishery in Pemalang, Central Java** (Nur Arofah, Ayu Ervinia, Mohamad Bagus Satria, Kuncoro Catur Nugroho, Wita Setioko)
- 6. Seasonal Comparison of Catch Abundance and Size of Blue Swimming Crab (*Portunus pelagicus*) in Rembang, Central Java** (Rasyid Prasetyo, Pahad Maulana, Muhammad Wijdan Taqiyuddin, Ayu Ervinia, Bambang Arif Nugraha, Kuncoro Catur Nugroho, Wita Setioko)
- 7. Population Dynamics of The Three-spot Swimming Crab (*Portunus sanguinolentus*) in Pati Waters, Central Java** (Kamal Mustabiq, Navisa Fairuz, Dicky Darmawan, Ayu Ervinia, Kuncoro Catur Nugroho, Wita Setioko)
- 8. Improving Size and Selectivity of Blue Swimming Crab *Portunus pelagicus* by using Collapsible Trap with Escape Vents in Pamekasan, Madura Island** (Farhan Ramadhan, Muhammad Wijdan Taqiyuddin, Mohamad Bagus Satria, Kuncoro Catur Nugroho, Wita Setioko)
- 9. Characteristics and Density of The Horseshoe Crab (*Tachypleus gigas*) from Gillnet Fishery in Pamekasan, Madura Island** (Pahad Maulana, Eka Nurrahema Ning Asih, Apri Arisandi, Andy Azis, Dicky Darmawan)
- 10. Blue Swimming Crab Cultivation Technique: Insight from Small-scale Fishery in the South Coast of Pamekasan, Madura Island** (Lailatul Qomariyah, Muhammad Wijdan Taqiyuddin, Mohamad Bagus Satria, Kuncoro Catur Nugroho, Wita Setioko)
- 11. Size Characteristics of Blue Swimming Crab *Portunus pelagicus* in the Tiworo Strait, Southeast Sulawesi** (Muhamad Cardin, Muhamad Welis Kadir, Ayu Ervinia, Bambang Arif Nugraha)
- 12. Growth and Survival Rate of Cultivated Blue Swimming Crab in the South Coast of Pamekasan, Madura Island** (Ridho Zulfikar Wicaksono, Mohamad Bagus Satria, Rasyid Prasetyo, Dicky Darmawan)
- 13. A Cost Benefit Analysis of Blue Swimming Crab Gillnet Fishery in Pangkajene Island, South Sulawesi** (Muhamad Welis, Mohamad Bagus Satria, Kuncoro Catur Nugroho, Wita Setioko)
- 14. Gonadal Maturity Levels and Hatching Performance of Blue Swimming Crab *Portunus pelagicus* in the Crab Box Apartment** (Lailatul Qomariyah, Ridho Zulfikar Wicaksono, Kuncoro Catur Nugroho, Wita Setioko)
- 15. Population Dynamics and Spawning Potential of Blue Swimming Crab *Portunus pelagicus* (Linnaeus, 1758) in Pamekasan, Madura Island** (Ayu Ervinia, Farhan Ramadhan, Lailatul Qomariyah, Kuncoro Catur Nugroho, Wita Setioko)

Trial of Mesh Size Gill Nets 4.5 Inch by Crab Fishermen

Most crab fishermen in Java use square traps with a size of 40 cm x 30 cm x 10 cm. Bubu is made of bamboo or iron. Meanwhile fishermen in South Konawe, Southeast Sulawesi use dome traps. An eco-friendly fishing gear, trap with exhaust ventilation is being introduced and tested in Pamekasan Madura.

On this occasion, after a joint discussion with Mr. Zarochman as a representative from BBPI Semarang regarding net fishing gear with a higher mesh size. Regular crab fishermen use gill nets of 3 - 4 inches.

This activity is expected to be able to provide information related to the effect of net fishing gear with a wide mesh size on crab catches and the level of selectivity for crabs.

This activity started in March 2022 and is in the data processing stage. Crab fishermen with gill nets usually go out to sea about > 4 miles from the shoreline. The pilot project for this activity was carried out in 4 locations namely **Rembang, Pamekasan, Cirebon, and Lampung**



Installation of VTS (Vessel Tracking System) on Crab Fishing Vessels as Tracking Tool Where Fishermen Catch Crab



Rembang
07/10/2021

The installation activity was attended by DKP Rembang and APRI enumerators and PANRITA staff



Pamekasan
08/10/2021

The installation was enthusiastically welcomed by KUB Berkah Claw Biru and APRI's CO-Management at the site



Pamandati
10/10/2021

Azhar Slamet and Panrita staff installed VTS at Pamandati

Trial installation of VTS and recording of crab capture tracks was carried out from August 2019 to December 2022 in the waters of Rembang [Central Java], Pamekasan [Madura] and Pamandati [Southeast Sulawesi]. In addition, an enumerator also recorded the total number of catches produced per ship per trip, the number of small crab catches, the number of by-catch, the number of female crabs laying eggs, the number of small catches [<10 cm]. The number of VTS installed in each location is 5 units in Rembang, 5 units in Pamekasan, and 5 units in Pamandati.

Technological advances continue to be updated by PANRITA as a cooperation partner in VTS providers. The unit renewal activity was carried out on October 8 - 10

Picture 6. Installation of VTS in Rembang, Pamekasan, Pamandati

2022. Activities are carried out in Rembang, Pamekasan, and Pamandati by updating the technology of using solar panel technology using the sun as the driving force for VTS devices.



We can also use the VTS tracking device on this ship as a tool to find out the location of our trap while at sea, so we can find its location.

Suparman - Leader of KUB Berkah Capit Biru

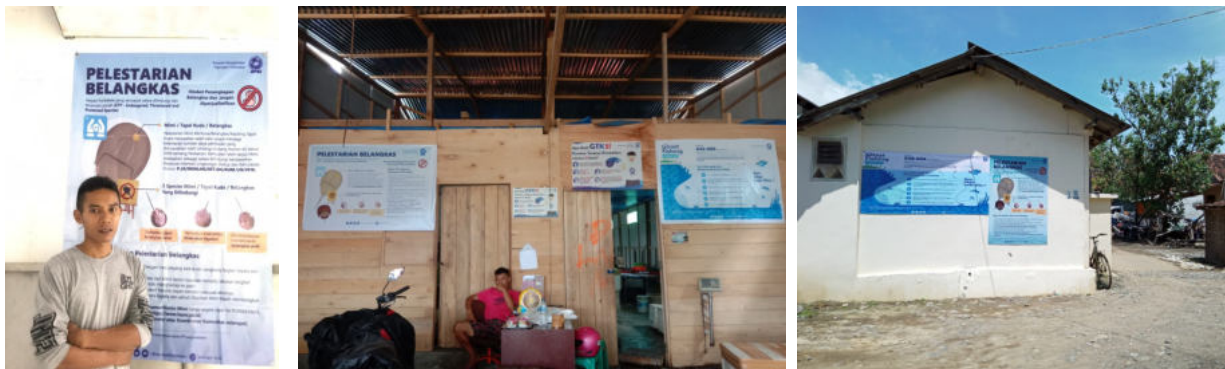
ETP Species Handling and Mitigation Training (Rembang - Pamekasan)



Picture 7. Training and outreach to handling and mitigating ETP species in collaboration with CETASI and UTM

APRI held Training on Mitigation and Handling of ETP Species on Friday, 28 May 2021 online and offline in Gedongmulyo Village, Rembang and Pagagan Village, Pamekasan. One of APRI's efforts to respond to important issues regarding ETP species as bycatch which can have quite a large impact and affect fishery products

ETP Species Socialization Banner at APRI Data Collection Locations



Picture 8. Banner installation and continued socialization by APRI Enumerators about animals included in the ETP.

One of APRI's efforts in responding to important issues regarding ETP species as bycatch which can have quite a large impact and affect fishery results. APRI provides education through placing banners and outreach regarding ETP species at landing sites.



“Ghost Fishing Clean Up” socialization and Ghost Fishing Reporting



Picture 9. Improving fishing gear is one of the efforts to prevent ghost fishing

Launching of APRI Data Center as a data center for crab fisheries traceability.



The use of environmentally friendly fishing gear must also maintain the marine environment because 640,000 tonnes of waste in the sea originates from discarded or damaged fishing gear or is carried away by currents. Therefore the data collection is related to Ghost Fishing to carry out 3R Recycle, Reduce, Reuse.

This activity was also recorded to determine the environmental impact due to wasted or lost fishing gear carried by currents on the aquatic environment. The pilot project for this activity has been carried out in Rembang and Pamekasan since 2020 until now.

Signing of the Proposed Location of the Crab Protected Area in the Region Conservation (KK-32) Apex.

On April 27 2022, APRI through Zulfikar's representatives participated in the FGD Review and Updating of the Zoning Plan for Coastal Areas and Small Islands (RZWP3K) for Central Java in Rembang Regency.

Protected areas are important for small crab protection areas not to be caught. Small crabs are generally found near the shoreline 1-2 miles so that the proposed conservation area can help crab stocks develop later.

The stages of the protected area are still in the review and study stage from the Provincial Office which will later be designated as a crab conservation area.



Picture 10. The proposed location of the blue swimming crab conservation area is in Rembang, Central Java

Marine Mammals Protection Act (MMPA) activities with the Ministry of Maritime Affairs and Fisheries of the Republic of Indonesia



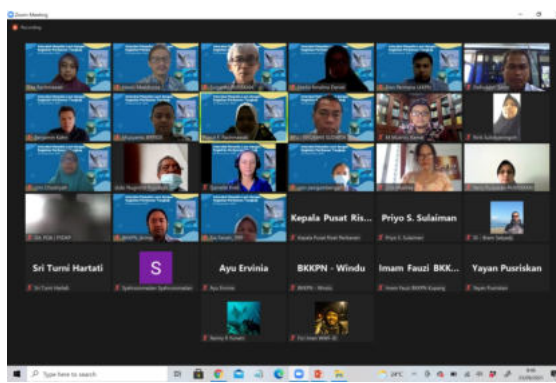
Fulfillment Activities of “Comparability Findings” in MMPA related to United States policies by NOAA

Discussion and consultation activities continue to be carried out by APRI as well as studies on the interaction of marine mammals with the crab fishery in collaboration with mammal experts (CETASI)

September 5, 2022. APRI through M. Bagus Satria as General Manager of APRI's FIP participated directly in team meetings regarding MMPA regulations, with various research results and reports collected. APRI as a leader in implementing FIP also continues to pay attention to the impact of the crab fishery on other ecosystems (P2).

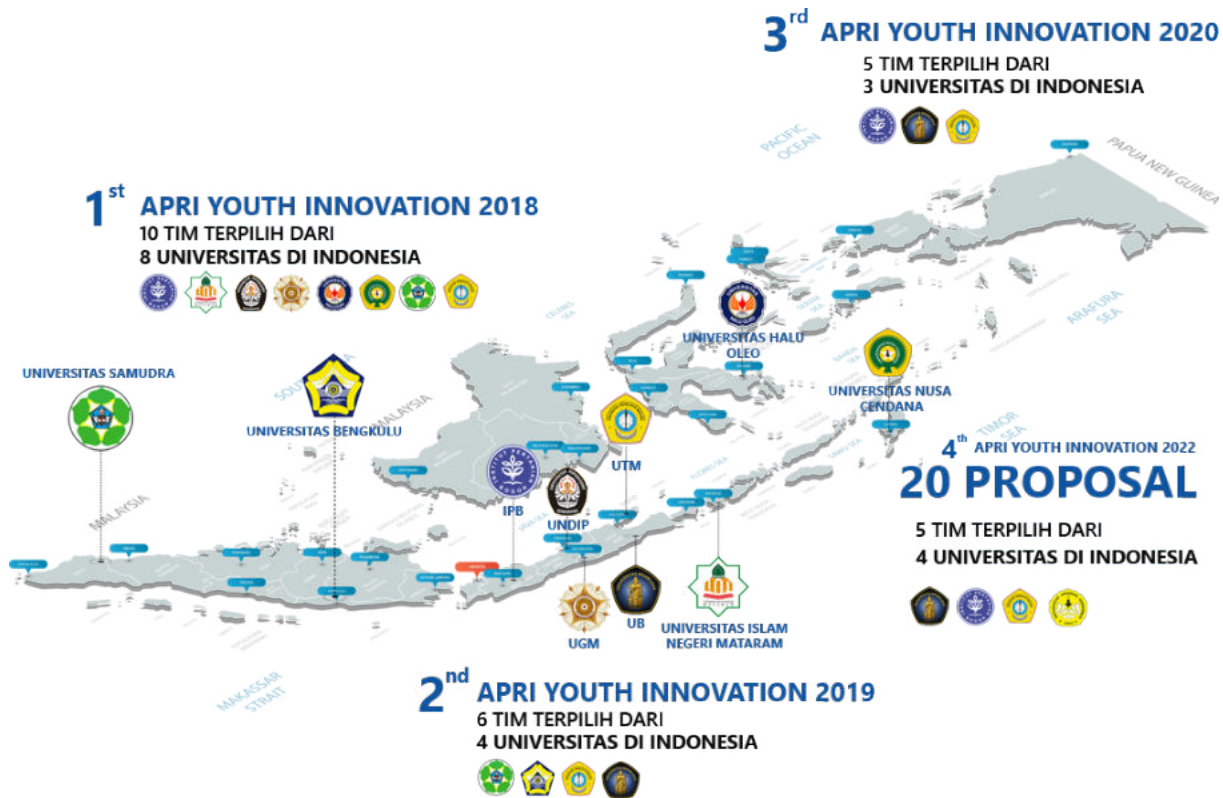
This activity began in early February 2021 until now awaiting a decision on the determination of crab commodities having low interaction with marine mammals.

In addition, APRI is also collaborating with Trunojoyo Madura University in an effort to handle and research interactions related to marine mammals through an Ecology Webinar and presented at the BRSDM meeting regarding the interaction of blue crab fisheries with marine mammals in Madura waters, East Java.



Picture 11. APRI's series of activities related to the interaction of marine mammals with the crab fishery

APRI Youth Innovation: Innovation and Research Event for Students Across Indonesia to Contribute to Crab Fisheries



Picture 11. List of participants who passed APRI Youth Innovation 2018-2022

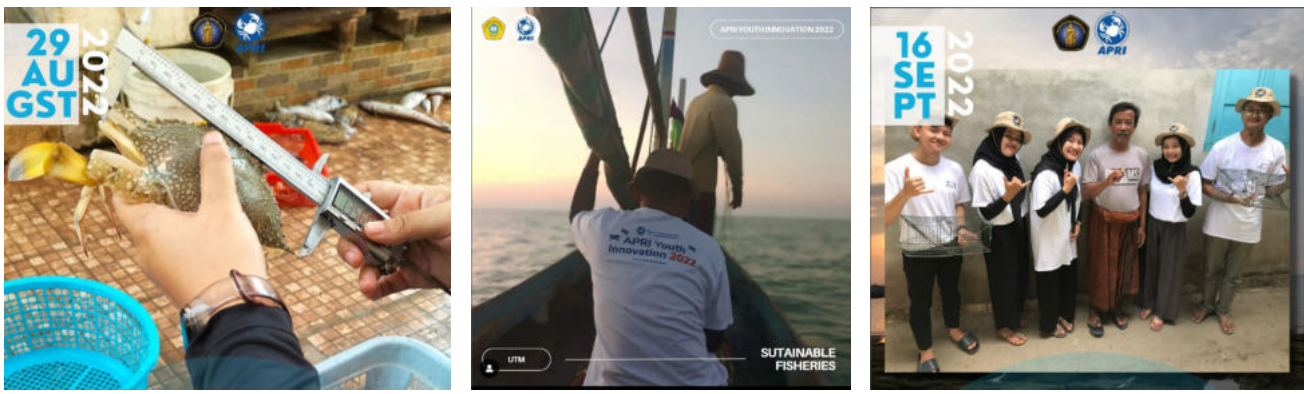
This APRI Youth Innovation activity is the fourth year in 2022 with a research focus on East Java WPP 712. Participants who take part in APRI Youth Innovation 2022 continue to experience improvement every year. This activity is still going on and started since August 2022. APRI Youth Innovation 2022 was followed by 20 selected proposals into 5 participants who passed to receive research funding.

A total of 4 universities were selected, namely from Brawijaya University, Bogor Agricultural Institute, Trunojoyo Madura University, and Jendral Soedirman University. Infographics of APRI Youth Innovation participants from 2018 can be seen in figure 11.



RESEARCH TITLE

- 1 Spawning Potential Ratio Approach and Catch per Unit Effort in the Management of Blue Snail Fish (*Portunus pelagicus*) in Lamongan, East Java
- 2 The Potential of Tanjung Widoro Waters Mangrove Ecosystem, Gresik, East Java As an Essential Habitat for Growth of Blue Crab.
- 3 Control of cannibalism and molting *Cherax quadricarinatus* with supplementation of crab shell waste in an effort to accelerate growth



Picture 12. Documentation of proposal participants passing APRI Youth Innovation 2022

The activity will be continued by presenting research results through the APRI Youth Innovation 2022 webinar which will be held this year. All participants qualifying for funding are required to present their activities as their reports.

In the future, this research by the university can produce innovations or ideas that can be implemented to support sustainable crab fisheries and improve the welfare of coastal communities in Indonesia.



APRI Youth Innovation can help final semester students in working on their thesis.

Hopefully in the future APRI Youth Innovation will continue to be there every year.

Pahad Maulana - Peserta APRI Youth Innovation 2020

4 Analysis of Potential Blue Crab Spawning Season in Paciran Waters, Lamongan, East Java: Sustainable Conservation Efforts

5 Abundance of Blackspot Sharks (*Carcharhius sealei*) in Sumenep Waters

4th APRI YOUTH INNOVATION 2022

The participants have carried out their activities and are at the stage of preparing a research report and will present it through the APRI Youth Innovation 2022 webinar. These five participants come from **4 well-known universities in Indonesia.**



UNIVERSITAS BRAWIJAYA

JUDUL PROPOSAL :
PENDEKATAN SPAWNING POTENTIAL RATIO DAN CATCH PER UNIT EFFORT DALAM PENGELOLAAN PERIKANAN RAJUNGAN (Portunus pelagicus) DI LAMONGAN, JAWA TIMUR

TIM PENYUSUN :
 Hanifa Ramadhani - Fadhil Akbar - Yasinta Rahmanyngtyas - Dita Kusuma Arfiyantari - Naufal Hilda Bahtiar

DOSEN PENDAMPING :
 Muhammad Arif Rahman, S.Pi, Mapp.Sc

Spawning Potential Ratio Approach and Catch per Unit Effort in the Management of Blue Snail Fish (*Portunus pelagicus*) in Lamongan, East Java



Team : Hanifa Ramadhani - Fadhil Akbar - Yasinta Rahmanyngtyas - Dita Kusuma Arfiyantari - Naufal Hilda Bahtiar

Supervisor : :Muhammad Arif Rahman, S.Pi, M.app.Sc



Lamongan, East Java



IPB UNIVERSITY

JUDUL PROPOSAL :
POTENSI EKOSISTEM MANGROVE PERAIRAN TANJUNG WIDORO, GRESIK, JAWA TIMUR SEBAGAI HABITAT ESENSIAL PERTUMBUHAN RAJUNGAN

TIM PENYUSUN :
 Siti Zanuba Aisyah - Irgi Fadilah Rahman - Rizky Sabrina Maharani - Nail Radhy Ilyas

DOSEN PENDAMPING :
 Dr. Beginer Subhan, S.Pi, M.Si

The Potential of Tanjung Widoro Waters Mangrove Ecosystem, Gresik, East Java As an Essential Habitat for Growth of Blue Crab.



Team : Siti Zanuba Aisyah - Irgi Fadilah Rahman - Rizky Sabrina Maharani - Nail Radhy Ilyas

Supervisor : :Dr. Beginer Subhan, S.Pi, M.Si



Gresik, East Java

Control of cannibalism and molting Cherax quadricarinatus with supplementation of crab shell waste in an effort to accelerate growth



Team : Umi Chofifah - Solikhah - Siti Khasanah
Supervisor : Dudi Muhammad Wildan, S.Pi, M.Si

Madura, East Java



Analysis of Potential Blue Crab Spawning Season in Paciran Waters, Lamongan, East Java: Sustainable Conservation Efforts



Team : Taufiq Wahyu Prastyo Aji - Nahl Firdaus Alatas - Bangkit Wiranat - Muhammad Arfian Praniza - Sapta Maulana

Supervisor : Taufik Budhi Purnomo, S.Pi., M.Si

Lamongan, East Java



Abundance of Blackspot Sharks (Carcharhius sealei) in Sumenep Waters



Team : Moch. Yusuf Kurniawan - Ika Masruroh - Maura Syafa Hafidah

Supervisor : Eka Nurrahema Ning Asih, S.Kel, M.Si

Madura, East Java



Program Kerjasama APRI - BRIN : Proyek Pengembangan Armada Nelayan Rajungan untuk Keberlanjutan Perikanan Rajungan



Rabu, 31 Agustus 2022. Kegiatan diskusi bersama dengan Bapak Ir. Zarochman M.Pi dari BRIN didampingi oleh Bapak Ir. Suparman dalam diskusi terkait inovasi dan pembaruan teknologi untuk keberlanjutan perikanan rajungan di Indonesia.

13 September 2022, Kegiatan ini sebagai langkah awal terkait program untuk pengembangan armada rajungan di Jawa Tengah dengan penanganan di atas kapal, Bapak Zarrochaman dan Bapak Suparman dari BRIN.



Pengembangan Armada Rajungan Jawa Tengah dengan Penanganan di atas Kapal

Bapak Ir. Bambang Arif Nugraha turut memberikan gambaran perikanan rajungan dari hulu hingga hilir. Kegiatan ini dilaksanakan secara daring dan luring dan dihadiri oleh BRIN, APRI, Anggota APRI, DKP Rembang, Nelayan, dan NGO.

Harapannya dengan adanya teknologi yang dikembangkan ini dapat membantu nelayan bisa menangkap rajungan kearah tengah dengan sistem kualitas mutu rajungan yang tetap terjaga.



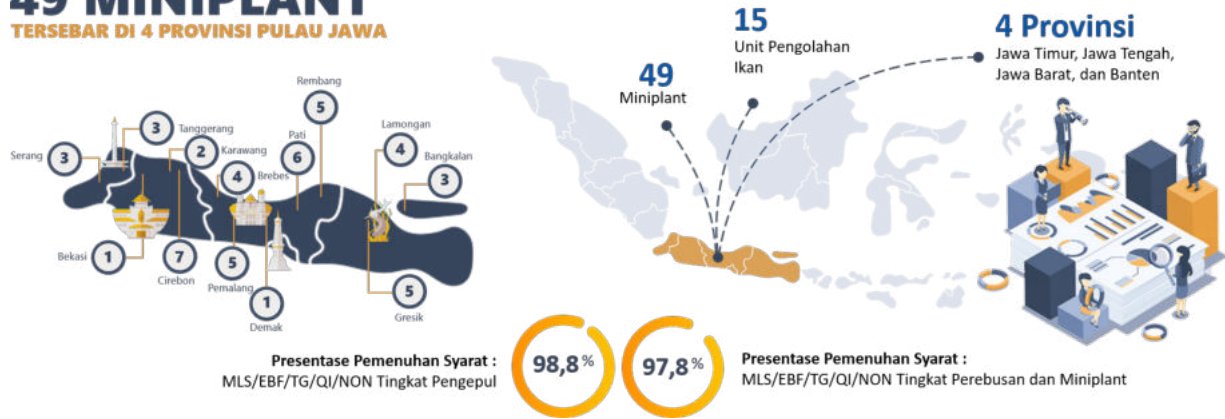
Pengembangan armada nelayan rajungan ini diterapkan pada nelayan kecil untuk menangkap rajungan lebih ke tengah, dan menangkap rajungan yang lebih besar.

Ir. Zarochman M.Pi - BRIN



Control Document Audit System (CDAS)

49 MINIPLANT TERSEBAR DI 4 PROVINSI PULAU JAWA



Supply chain tools used to support implementation and compliance with regulations in force in Indonesian crab fisheries. The scope of this audit includes landing sites, cooking stations, collectors and miniplants with a focus on ensuring that the minimum legal size is MLS) i.e. carapace width >10cm.

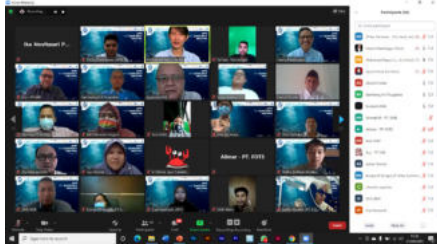
Prohibition of catching and processing egg bearing female (EBF) crab and prohibition of fishing gear (Mini) trawls in fisheries. This activity was carried out in January - March 2021. CDAS is a form of supply chain compliance in supporting PERMEN KP No. 17 2021.

Establishment of the Blue Swimming Crab Fishery Management Committee in East Java Province through the Decree of the Head of Service

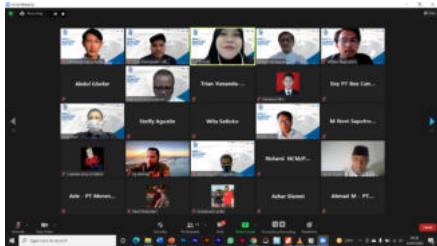


SK Head of DKP Prov. East Java has been issued and signed **SK:188.4/864/120.3/2021** through quite a long journey. The activity began with a stakeholder meeting on June 3 2021 and the Decree of the Head of Service was issued on June 8 2022. Attended by the East Java DKP and Regency DKP as well as APRI and Brawijaya University, UNAIR and UTM as well as crab business actors (UPI), BKIPM Surabaya .

APRI Quarterly Meeting 2021 - 2022



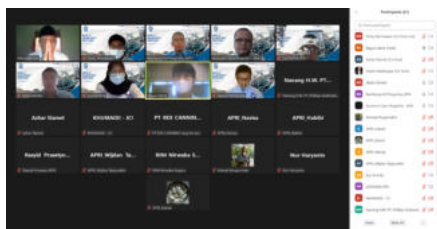
Q1 Activity : Zoom Meeting



Q2 Activity : Zoom Meeting



: Harris Hotel Surabaya



Q4 Activity : Zoom Meeting



Q1 Activity : Harris Hotel Surabaya

APRI has carried out routine activities every quarter of the year, during the 2021 - 2022 management period APRI has held six meetings via online meetings due to the pandemic and hybrid offline at the end of the year.

This routine activity is an agenda that is quite important to discuss the condition and development of FIP as well as the internal management of the organization. The following is a list of quarter meeting activities in 2021 - 2022:

Q1 - Zoom Meeting : 31 March 2021

Q2 - Zoom Meeting : 17 July 2021

Q3 - Hybrid : October 9, 2021

Q4 - Zoom Meeting : 19 December 2021

Q1 - Hybrid : April 17, 2022

Q2 - Hybrid : July 16, 2022

APRI's Q2 activity presented Mr. Trian Yunanda from DGPT KKP and Prof. Indra Jaya as KOMNASKAJISKAN and became the launch of APRI Datacenter.



Q2 Activity : Vasa Hotel Surabaya

DMC - Committee for Management of Data on the Blue Swimming Crab Fisheries of East Java Province

Saturday, July 29 2022. East Java is a province that has the potential for marine fisheries both from aquaculture and capture fisheries, one of which is blue swimming crab. One of APRI's focuses in the Fishery Improvement Project (FIP) program is to support the crab stock assessment and improvement program (stock assessment).

Through the Meeting of the Committee for Data Management of the Blue Snail Fish in East Java Province as a means of collecting, improving, standardizing, and communicating related to crab fisheries data in East Java Province. The importance of data collection as a tool for fisheries management is quite important.



APRI Meeting Activities in Efforts to Manage the Crab Fishery at FMA of Indonesia



Preparation of RPP (Fishery Management Plan) in FMA RI.

On February 17-18 2022, APRI participated in the discussion of the blue swimming crab fisheries management plan (RPP) draft at WPPNRI. Dr. Ayu Ervinia and Azhar Slamet as representatives of APRI attended the meeting to discuss this draft in Bogor and online.



Meeting of Fisheries Management Institutions of the Republic of Indonesia Fishery Management Area 714

18-20 August 2022. APRI through Mr. Ir. Bambang Arif Nugraha via online and Muh. APRI enumerator Wellis attended the meeting directly which was held through the Kendari Ocean Fishing Port as the executive coordinator of WPPNRI 714 with all members of the Pokja, commissions and related Stakeholders.



Action Plan for Sustainable Management of Crab Fish in West Java Province

December 7-8 2021, Activities carried out by the Office of Maritime Affairs and Fisheries of West Java Province. APRI was also present at the activity as a team for preparing an action plan for sustainable fisheries management through the Decree of the Governor of West Java number 523.05/Kep.751-Rek/2020.



Lampung Province Sustainable Swimming Pool Management Committee (KPPRB) meeting

Senin 23, November 2021. Kegiatan yang dilaksanakan secara luring dan daring ini untuk membahas capaian antar kelompok kerja (Pokja) serta rencana aksi kedepan untuk perikanan rajungan berkelanjutan di Lampung

APRI Meeting Activities related to FIP (Fishery Improvement Project)



Blue Swimming Crab Fisheries Coalition meeting

On February 17-18 2022, APRI participated in the discussion of the blue swimming crab fisheries management plan (RPP) draft at WPPNRI. Dr. Ayu Ervinia and Azhar Slamet as representatives of APRI attended the meeting to discuss this draft in Bogor and online.



ASEAN FIP Managers Meeting

18-20 August 2022. APRI through Mr. Ir. Bambang Arif Nugraha via online and Muh. APRI enumerator Wellis attended the meeting directly which was held through the Kendari Ocean Fishing Port as the executive coordinator of WPPNRI 714 with all members of the Pokja, commissions and related Stakeholders.



National FIP meeting

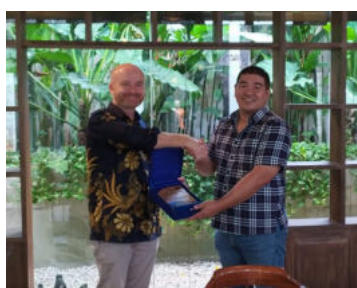
Tuesday, November 9 2021. It has been carried out online and offline at the Borobudur Hotel, Jakarta. At the coordination meeting of the national fisheries improvement program implemented by the DGPT of the Ministry of Maritime Affairs and Fisheries, APRI had the opportunity to present the development of the Crab Fishery FIP (Fishery Improvement Project). In the October audit, APRI's FIP indicator experienced an improvement in value on indicator 2 (Minimizing Environmental Impact) according to what Dr. Hawis Madduppa as Executive Director of APRI.

APRI - MSC Indonesia Meeting Activities



MSC MONEV Activities - MMAF TPOA TEAM

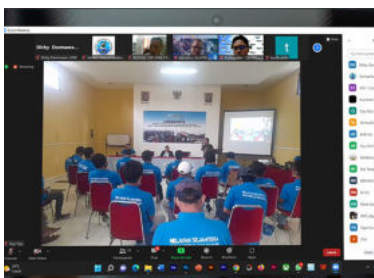
For two days APRI participated in the MSC Indonesia MonEv activities from the MMAF and the TPOA Team for two days. The activity began with a meeting with fisheries management stakeholders at the East Java Maritime Affairs and Fisheries Service. This activity is to assess the benefits of cooperation for related stakeholders.



APRI received an Award as FIP Implementer by MSC

Tuesday, 7 June 2022. APRI attended an invitation from MSC Indonesia. In this activity MSC gave appreciation in the form of an award plaque by Mr. Patrick Cleo as Regional Director of Asia Pacific MSC to Mr. Wita Setioko as APRI representative.

APRI Meeting Activities with NGOs



Invitation to Discussion of West Java IPPRB and SNI (Indonesian Fishermen's Union)

Monday 23 November 2021. This activity, which was carried out offline and online, was to discuss achievements between working groups (Pokja) and future action plans for sustainable crab fisheries in Lampung



FORKOM NELANGSA Discussion Invitation

APRI Attends Nelangsa Forkom National Coordination Meeting in Semarang. 25-26 August 2022. APRI attended this activity directly in Semarang. This activity discussed several topics related to crab fisheries, especially in Central Java.

Industrial Aspect FGD Activities with Business Players and Associations



Friday, 19 August 2022. APRI participated in activities carried out by the Ministry of BKPM regarding the preparation of a roadmap for downstream strategic investments. Through Ir. Bambang Arif Nugraha and Dr. Ayu Ervinia as the representative of APRI conveyed important matters related to value added products and the development of crab waste products.



This activity also continues for stages in each region. The importance of this planning is for investment in crab fishery products which are superior commodities.

Blue swimming crab is one of Indonesia's leading export commodities, with the main export destination country being America. Challenges in the downstream business of the blue swimming crab industry are related to licensing policies, fuel requirements, fishermen's licensing fees, small crab SMEs, laboratory analysis (Chloramphenicol antibiotics), hatchery development and crab cultivation, regulations for export destination countries (America) require the Marine Mammal Protection Act (MMPA) so that must be supported by research, and infrastructure development and supply chain strengthening in Eastern Indonesia.

Coordination Meeting and Discussion with PDSPKP KKP and the Office of Maritime Affairs and Fisheries of East Java Province



Meeting activities discussed conditions, challenges, and hopes for Indonesian crab fisheries

Friday, 1 July 2022. The Directorate General of Strengthening the Competitiveness of Marine and Fishery Products held a coordination meeting with business actors who are members of APRI and all Maritime Services in the East Java Region.

Located in the East Java DKP Building, Surabaya. Mr Ir. Kuncoro Catur Nugroho M.M as Chair of APRI explained about the conditions, expectations and challenges of blue swimming crab in global competition.

The results of this discussion also produce long-term and short-term solutions in an effort to strengthen the competitiveness of blue crab fishery products.

Webinar Activities to Promote Management Sustainable BSC Fisheries



UNDIP Webinar Activities: Strengthening Indonesian Blue Crab

Tuesday, August 30 2022. The activity which was carried out by the Faculty of Fisheries and Marine Sciences, Diponegoro University presented several speakers, namely Mrs. Ir. Artati Widiarti, M.A, Dr. Ir. Zairion, M.Sc, Ir. Kuncoro Catur Nugroho M.M, Prof. dr. Indah Susilowati, M.Sc., Ph.D, and Wita Setioko, STP., M.M.

The conclusions from the crab strengthening activities can be summarized as follows:

1. We have all collaborated starting from research (Government, Universities, APRI, Associations) but don't be pessimistic because we always get convenience from God. Co-assistance is needed to answer the challenges ahead.
2. SPR is highly recommended by overseas buyers, SPR Research Order.
3. This webinar is enrichment from industry and students who will continue to collaborate to increase co-existence through discussion
4. PR in the future: Startups can be more regulated, especially regarding requirements for the industry that must be met, especially if as a supplier, as well as fisheries justice needs to be done.



Prayer together for the Family of the Alm. Dr. Hawis Madduppa

Saturday, May 14 2022. APRI held a Prayer and Line of Love activity for the Alm family. Dr. Hawis Madduppa. In 2014, Dr. Hawis Madduppa joined the Indonesian Rajungan Fishery Management Association (APRI) he is one of the figures who can unite business with science.

This activity was attended by the family of the deceased, important figures who knew him, as well as his friends during his lifetime.





Meeting at the NFI office with (Mr Gavin Gibbons VP Communication NFI and Mrs. Liza M. Weddig

This meeting was held on August 8 2022 to discuss NOAA

(Gavin and Liza) who will contact NOAA and the Indonesian Embassy of Commerce to follow up and speak directly to free the Blue Swimming Crab from the list. according to them the information in the research is sufficient. and this meeting is also the Philippines Project which was transferred to Indonesia where APRI was asked to find a place for restocking which will give us the opportunity to make our own hatchery and restocking. The activity also discussed the 4.5 inch net pilot project whether it affected the SPR results



CONCLUSION



During this management period there were still many ongoing activities, in the future APRI will continue to optimize activities related to improving FIP fisheries.

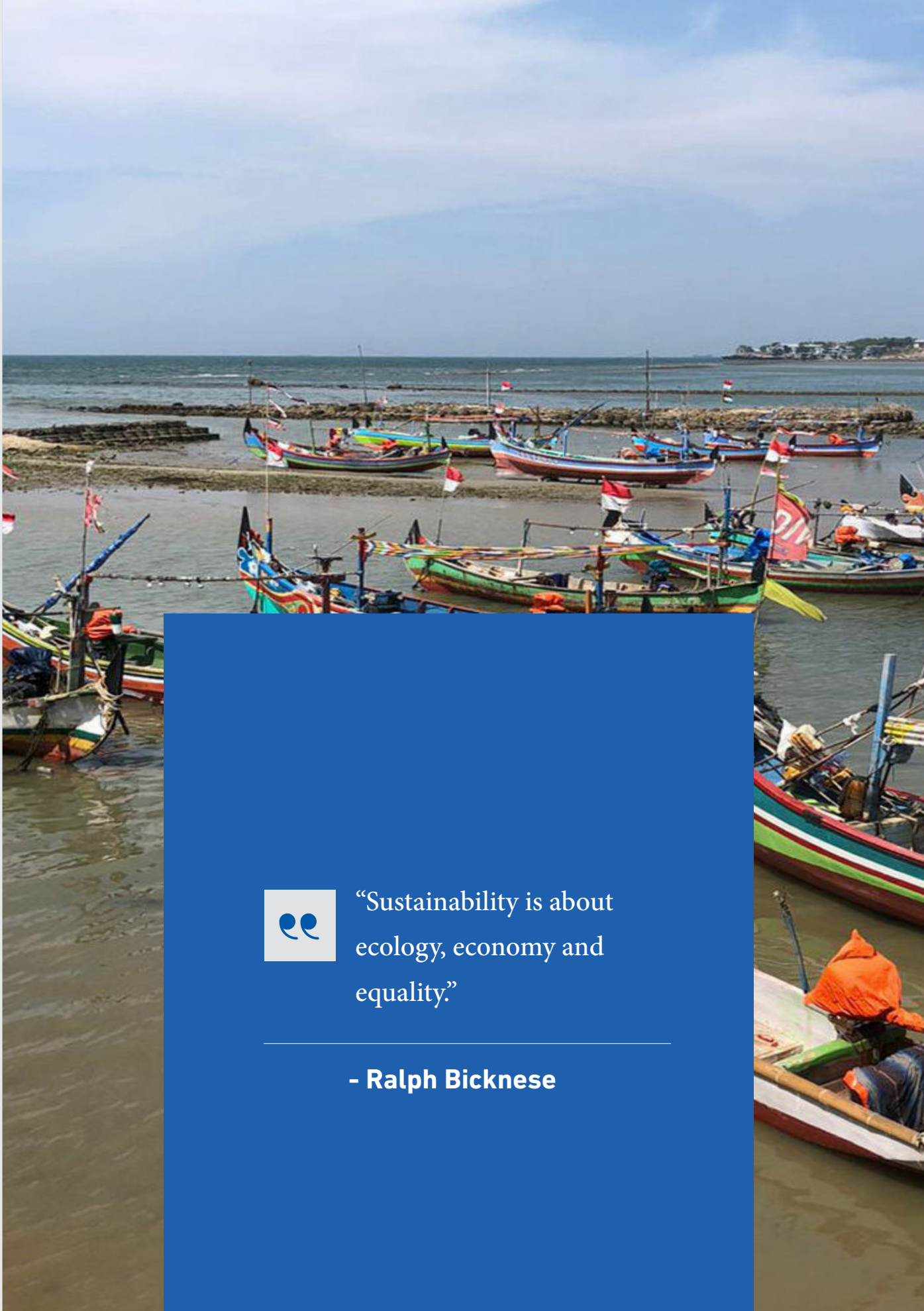
PRI and its members will continue to be committed to campaigning for sustainable fisheries management. 18 APRI members continue to work on efforts to improve the crab fisheries through FIP. The development of swimming crab cultivation continues to be pursued by working collaboratively between BBPBAP Jepara, APRI, and KP Sidoarjo Polytechnic.

We express our deepest gratitude to all APRI partner partners and members who have assisted in carrying out various activities related to crab FIP.

Hopefully in the coming year the blue swimming crab fishery will be ecolabel certified so that it can be said that the crab fishery management in Indonesia has been well managed not to exploit natural resources.

There will be more challenges and opportunities in the future, of course we must prepare to face them. We hope that this accountability report for the 2020-2022 period will be well received.





“Sustainability is about ecology, economy and equality.”

- Ralph Bicknese



THANK YOU

To all APRI Members and Partners

Partner APRI 2021 - 2022



ANGGOTA APRI





ASOSIASI PENGELOLAAN RAJUNGAN INDONESIA

Jl. Dukuh Kupang Timur XI No. 33, Surabaya, Jawa Timur, Indonesia

www.apri.or.id



Download E-Laporan APRI dalam bentuk PDF melalui QR di samping atau kunjungi website APRI

Kontak kami :

✉ : rajunganindonesia@gmail.com | [f](https://www.facebook.com/rajunganindonesia) | [i](https://www.instagram.com/rajunganindonesia) | [y](https://www.youtube.com/rajunganindonesia) | [t](https://www.tiktok.com/rajunganindonesia) | @rajunganindonesia | www.apri.or.id