

APRIL - JULY 2023 | 7(2) : 2023



Quarterly Bulletin

www.apri.or.id



15

JULY

APRI : Aquaculture for the Future Indonesian Blue Swimming Crab Fishery

The development of innovation and technology in cultivation efforts is an alternative long term in supporting sustainability in Indonesian fisheries

Quarterly Bulletin

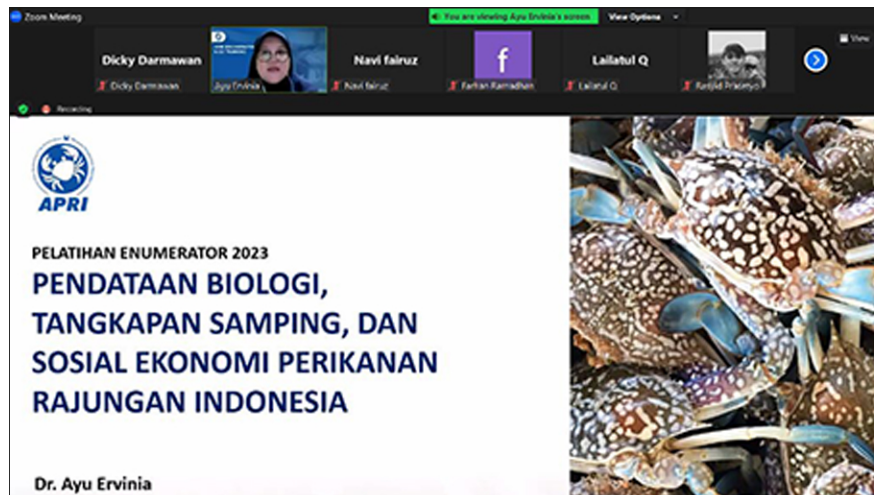
www.apri.or.id

PHOTO : APRI 2023

About APRI

APRI and all members are campaigning sustainability crab harvest to the supply chain for effective impact, increasing crab recruitment through stock enhancement, collaborating with Universities to support scientific research, supporting Ministry of Marine Affairs and Fisheries to develop national Fishery Management Plan and working closely with Fishers community to establish community based fishery management. All project activities are managed in a Fishery Improvement Project (FIP), which determined as 6 FIP stages. Fishery Improvement Project will create sustainable impact to the supply chain, blue swimming crab resources and also to the ecosystem where the blue swimming crab harvested.

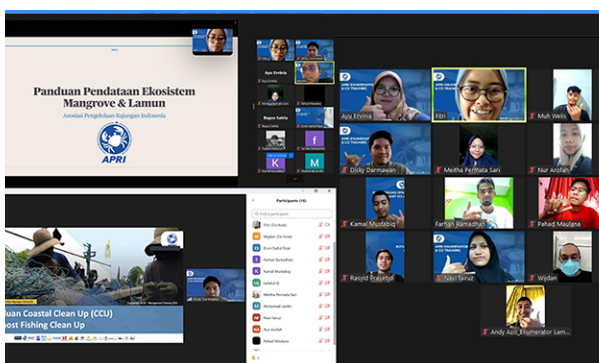
APRI Members



APRI Enumerator and CO-Management Training 2023

14 and 18 April 2023. APRI enumerator and CO-Management training activities to increase data collection capacity and knowledge in the field. This activity was directly led by Dr. Ayu Ervinia as Research and Executive Director of APRI as well as a speaker at this training. This training is also carried out in several sessions and each session will be filled with materials related to swimming crab FIP and useful for the provision of enumerator friends and APRI CO-management in the field.

So far two sessions have been held online with the first topic related to the introduction of Crab FIP by APRI's General Manager of FIP Implementation, namely M. Bagus Satria and then related to Biological and NTS data collection guide by Dr. Come on, Ervina. This activity will be attended by all APRI Enumerators and CO-Management in all fields. In the second session which was held during Ramadhan yesterday also went smoothly, in the second session the enumerators and CO-Management of APRI received material related to Observation of Mangrove and Seagrass Habitat by APRI Staff, then the next material related to Ghost Fishing Clean UP and Coastal Clean UP as material introduction to APRI enumerators and CO-Management for activities that have a positive impact on the blue swimming crab fishery.

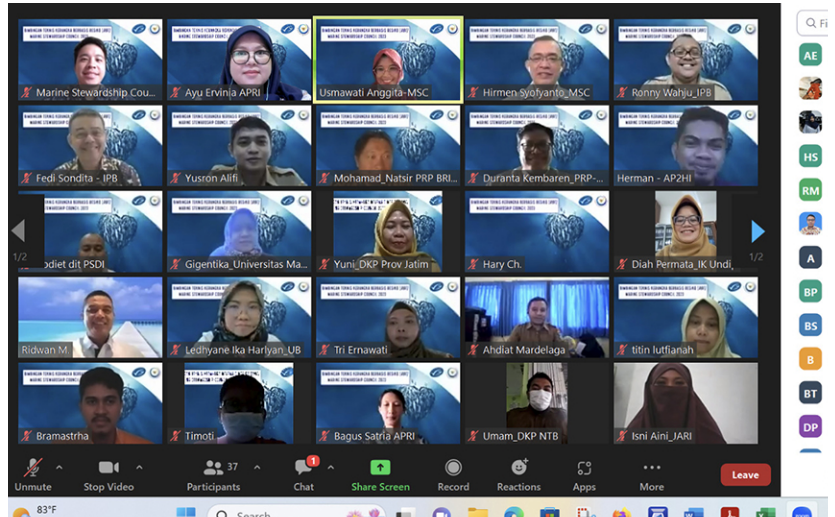




Measurement Assistance for Small PAS Document Ds. Pagagan

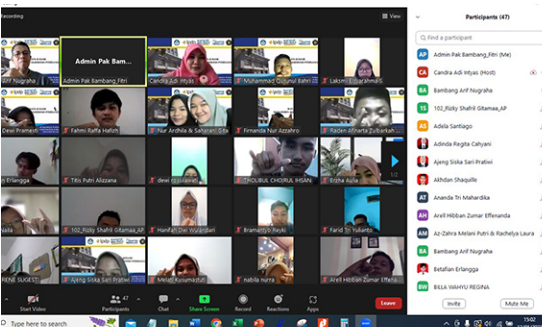
Tuesday, May 9 2023. Lailatul Qomariyah as APRI CO-Management in Pamekasan was also present to accompany the activities of measuring blue swimming crab fishing vessels in Pagagan Village which was directly led by the Syahbandar Leader and his staff. In addition, representatives of the Marine Affairs and Fisheries Bureau of Pamekasan were also present.

For ships with a gross tonnage of less than 7 GT, the Small Pas is one of the important documents in the form of a certificate that can be used as ship ownership, ship nationality certificates, sailing documents, even business credit guarantees, as well as providing convenience in data collection if there is a danger at sea. while sailing.



Marine Stewardship Council (MSC) Risk Based Framework Training 2023

11-17 May 2023. APRI Had the opportunity to take part in activities carried out by MSC online. This activity is a useful training activity in risk analysis for fisheries in Indonesia. This activity was also attended by several related stakeholders.



APRI Invites UNHAS and UB Students know the Meaning of Sustainability in Environment and Industry

Through the Activities of Teaching Practitioners of Fisheries Agribusiness Study Program at Hasanuddin University Makassar and Brawijaya University Malang, Mr. Ir. APRI Expert Officer Bambang Arif Nugraha provided material on fisheries agribusiness entrepreneurship, both in terms of commodity selection, production and technology innovation, production management, marketing management to social entrepreneurship and business development.



Outreach Activities Related to Government Regulations No. 11 of 2023 Regarding Measured Catching of Fish.

Tuesday, May 23 2023. The Ministry of Marine Affairs and Fisheries carried out a socialization activity for Government Regulation No. 11 of 2023 concerning Measured Catch of Fish and public consultation on Draft Regulation of the Minister of Marine Affairs and Fisheries concerning Regulations for Implementing Government Regulation No. 11 of 2023. This activity was attended by APRI through APRI's General Manager for FIP Implementation (M. Bagus Satria).



"Roundtable Discussion on Sustainable Seafood Product in Domestic Market"

Friday, June 9 2023. APRI also attended the "Roundtable Discussion on Sustainable Seafood Product in Domestic Market" organized by the Marine Stewardship Council (MSC) Indonesia.



Small PAS Measurement Assistance with DKP East Java and KSOP Pasuruan

June 23, 2023. Around 290 fishing boats in Lekok District, Pasuruan Regency, which expanded at the opening of the Joint Kesyahbandaran and Port Authority (KSOP) outlet in Pasuruan, have now carried out vessel measurements to meet the requirements for issuing Small PAS for fishermen.



National FIP Meeting 2023

Tuesday, 13 June 2023, APRI as the FIP implementer in the crab fishery was also present at the National FIP meeting in 2023 which was organized by the Ministry of Marine Affairs and Fisheries of the Republic of Indonesia and the Indonesian Marine Stewardship Council (MSC) to support sustainable capture fisheries in Indonesia.



Signing of the APRI Collaboration MoU together KP Sidoarjo Polytechnic.

Friday, 14 July 2023. The signing took place at the KP Sidoarjo Polytechnic Campus and was signed by the Chairperson of APRI, Mr. Ir. Kuncoro Catur Nugroho M.M with Mr. I Gusti Putu Gede Rumayasa Yudana, S.Pi, M.P as Director of KP Sidoarjo Polytechnic.

This activity aims to cooperate in the sustainability of blue swimming crab fisheries and continue existing collaborations such as developing innovation and technology for crab cultivation.



Pasuruan District Fisheries Bureau Collaborates with APRI in Development of Fishery Resources and several Other Stakeholders.

Friday, 23 June 2023. This activity is an activity for Guiding the Control of Fishery Resources and Fishing Routes carried out by the Pasuruan District Fisheries Service by collaborating with a number of stakeholders such as: POLAIRUD, PDSKP, and APRI



Development Activities for Innovation and Technology Crab Enlargement with the Multilevel Crab Box Concept in a Round Pool

Saturday, July 15 2023. Development activities for crab enlargement were carried out in Paciran, East Java as many as 2,000 crab seeds entered in modified boxes with levels. And about 5,000 crab seeds were released in a concrete and round pond by providing shelter.

Mr Ir. Bambang Arif Nugraha together with APRI staff and KP Sidoarjo Polytechnic Cadets jointly carried out stocking in the second cycle to continue to evaluate and improve towards future aquaculture for crab fisheries in Indonesia.

It doesn't stop here, later this crab will be carried out **"Underwater Restocking"** and **"Tagging"** to find out an effect in this cultivation activity on the ecosystem environment. On 28-31 August 2023 a survey was also carried out to release underwater restocking activities by placing crab boxes in seagrass and coral ecosystems.

[More info →](#)





BSC Aquaculture is the Future Sustainable : APRI Will Do It "Underwater Restocking" and Development for Crab Cultivation



July 26, 2023. APRI held a discussion activity with the team from the Smithsonian and IMET to discuss research on swimming crabs to be carried out in Makassar and Java Waters.

28-31 July 2023. The APRI team has surveyed several locations to determine "underwater restocking" for blue swimming crab, these locations are sandy areas, corals, and seagrass ecosystems also contain mangroves.

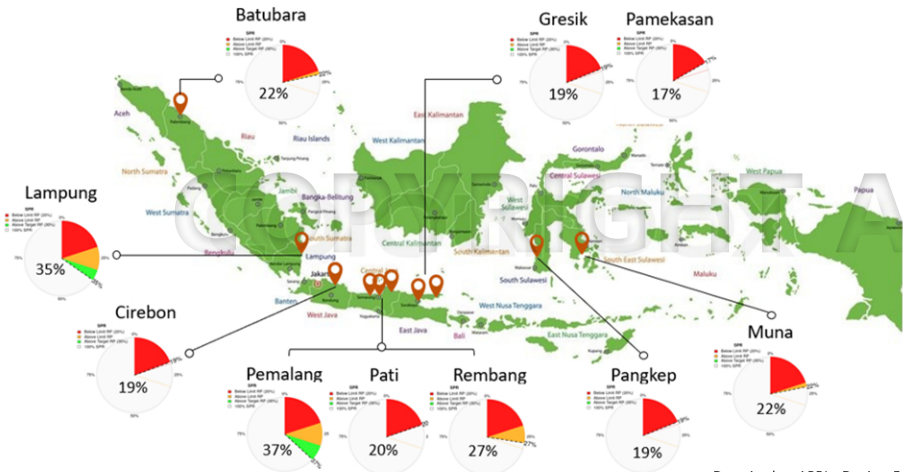


This activity will be carried out in August and "tagging" will be carried out on the crabs that will be restocked in order to find out the benefits and impacts of this activity.

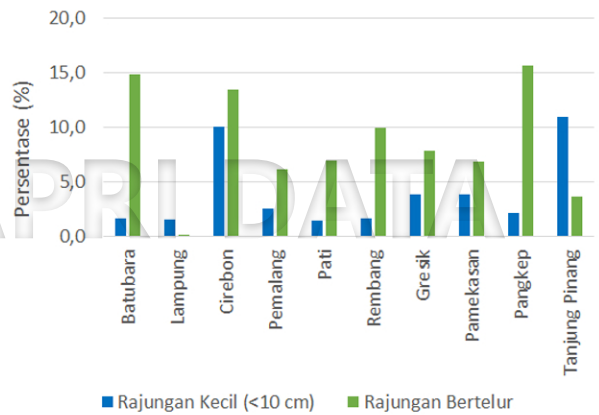


STOCK ASSESSMENT

A. Spawning Potential Ratio (SPR)



B. MLS and EBF Presentation



Data Analyst APRI - Dr. Ayu Ervinia (Januari-May 2023) © Copyright - Asosiasi Pengelolaan Rajungan Indonesia 2023

SPR values of BSC varied spatially across Indonesian waters. BSC stocks in most locations met limit reference may SPR20%. SPR values ranged from 17% to 35% in 2022 and from 17% to 37% in 2023. The highest SPR for blue swimming crabs was observed in Lampung and Pemalang. The lowest SPR value was found in Gresik and Pangkep.



FISHERY IMPROVEMENT PROJECT (FIP)

APRI - whose members cover more than 30 seafood processing industries - accounts for more than 85% of crab processing in Indonesia. All members involved work to not only promote sustainable crab fishing, but also sustainable supply chains. FIP aims to support scientific research through collaboration with universities, to develop a national Fisheries Management plan in partnership with the Ministry of Marine Affairs and Fisheries, and to establish community-based fisheries management in collaboration with local fishing communities. FIPs are intended to have a long-term impact on the sustainability of the fishery supply chain, blue crab resources, as well as the ecosystems where these species are caught.

FIP OBJECTIVES

- Implement the FIP work plan and transition Indonesia Blue Swimming Crab Fisheries to full MSC assessment by the end of December 2024.
- Changing practices (no taking small/juvenile crabs, nor spawning crabs), increasing stocks, developing policies that protect and maintain sustainable crabs (including protection of nursery grounds, spawning areas) by the end of December 2024
- Develop a community-based management plan for the Indonesian blue swimming crab that includes community resource management that protects the nursery, communication and awareness, resulting in a control document and an established traceability system by the end of December 2024

1 - Sustainable fish stocks

| Indicator | Y0 | Y1 | Y2 | Y3 | Y4 | Y5 | Y6 | Y7 |
|---|-----|-----|-----|-----|-----|-----|-----|-----|
| Stock status outcome (1.1.1) | Red | Red | Red | Red | Red | Red | Red | Red |
| Stock rebuilding outcome (1.1.2) | Red | Red | Red | Red | Red | Red | Red | Red |
| Harvest strategy (1.2.1) | Red | Red | Red | Red | Red | Red | Red | Red |
| Harvest control rules & tools (1.2.2) | Red | Red | Red | Red | Red | Red | Red | Red |
| Harvest strategy information & monitoring (1.2.3) | Red | Red | Red | Red | Red | Red | Red | Red |
| Assessment of stock status (1.2.4) | Red | Red | Red | Red | Red | Red | Red | Red |

2 - Minimizing environmental impact

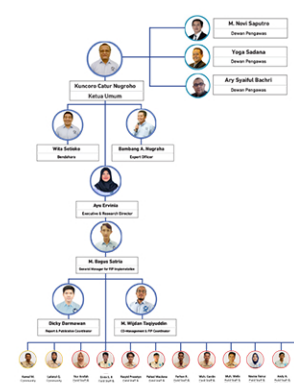
| Indicator | Y0 | Y1 | Y2 | Y3 | Y4 | Y5 | Y6 | Y7 |
|---------------------------------------|-----|-----|-----|-----|-----|-----|-----|-----|
| Primary species outcome (2.1.1) | Red | Red | Red | Red | Red | Red | Red | Red |
| Primary species management (2.1.2) | Red | Red | Red | Red | Red | Red | Red | Red |
| Primary species information (2.1.3) | Red | Red | Red | Red | Red | Red | Red | Red |
| Secondary species outcome (2.2.1) | Red | Red | Red | Red | Red | Red | Red | Red |
| Secondary species management (2.2.2) | Red | Red | Red | Red | Red | Red | Red | Red |
| Secondary species information (2.2.3) | Red | Red | Red | Red | Red | Red | Red | Red |
| ETP species outcome (2.3.1) | Red | Red | Red | Red | Red | Red | Red | Red |
| ETP species management (2.3.2) | Red | Red | Red | Red | Red | Red | Red | Red |
| ETP species information (2.3.3) | Red | Red | Red | Red | Red | Red | Red | Red |
| Habitat outcome (2.4.1) | Red | Red | Red | Red | Red | Red | Red | Red |
| Habitat management (2.4.2) | Red | Red | Red | Red | Red | Red | Red | Red |
| Habitat information (2.4.3) | Red | Red | Red | Red | Red | Red | Red | Red |
| Ecosystem outcome (2.5.1) | Red | Red | Red | Red | Red | Red | Red | Red |
| Ecosystem management (2.5.2) | Red | Red | Red | Red | Red | Red | Red | Red |
| Ecosystem information (2.5.3) | Red | Red | Red | Red | Red | Red | Red | Red |

3 - Effective management

| Indicator | Y0 | Y1 | Y2 | Y3 | Y4 | Y5 | Y6 | Y7 |
|--|-----|-----|-----|-----|-----|-----|-----|-----|
| Legal/customary framework (3.1.1) | Red | Red | Red | Red | Red | Red | Red | Red |
| Consultation rules & responsibilities (3.1.2) | Red | Red | Red | Red | Red | Red | Red | Red |
| Governance/policy long-term objectives (3.1.3) | Red | Red | Red | Red | Red | Red | Red | Red |
| Fishery-specific objectives (3.2.1) | Red | Red | Red | Red | Red | Red | Red | Red |
| Decision-making processes (3.2.2) | Red | Red | Red | Red | Red | Red | Red | Red |
| Compliance & enforcement (3.2.3) | Red | Red | Red | Red | Red | Red | Red | Red |
| Monitoring & management performance evaluation (3.2.4) | Red | Red | Red | Red | Red | Red | Red | Red |

Scoring Range: 100 (100%) 50+ (50%) 0-50 (0-50%)
 Not addressed by this FIP
 Year scored using MSC Version 3
 Click to see why an indicator is not being addressed
 Click to see the 0-60 score (if available)
 There has been progress within the 0-60 scoring level
 There has been a setback within the 0-60 scoring level

APRI Structure



Learn more about FIP APRI



Scan for **Download PDF !**



INDONESIAN BLUE SWIMMING CRAB ASSOCIATION
Jl. Dukuh Kupang Timur XI No. 33, Surabaya, East Java, Indonesia

 : rajunganindonesia@gmail.com     | [@rajunganindonesia](https://www.instagram.com/rajunganindonesia) |  www.apri.or.id